



**CHIA-MO**  
BOLOGNA - ITALY

# PINOLER

***Se også de øvrige CHIA-MO prislister:  
Spændetænger, Rømmeværktøj og Holdere***



- ⇒ Rullepinoler m/ VDI skaft .....Side 2
- ⇒ Rullepinoler m/ Cyl. skaft.... Side 2-4

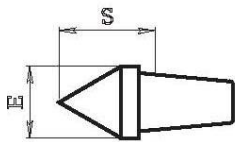


Fig. 1

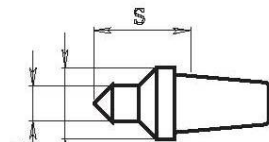


Fig. 2

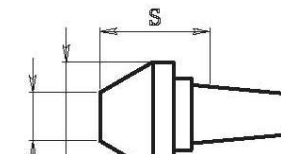


Fig. 3

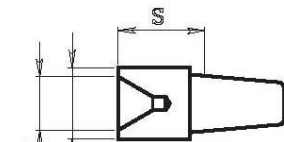
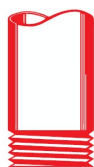


Fig. 4



**HAJO TOOL**  
PROFESSIONELT SPECIALVÆRKTØJ



## Rullepinol m/kompression, løse spidser & VDI skaft

Varenr.	D	d1	d3	L	H	S	C
CM9V3.30.78	30	58	68	78	20	34	2,5
CM9V3.40.80	40	58	83	80	22	34	2,5

## Spidser til rullepinol m/ VDI skaft

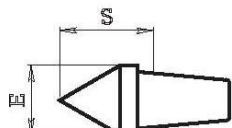


Fig. 1

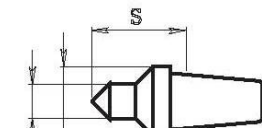


Fig. 2

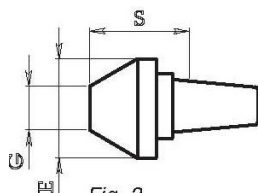


Fig. 3

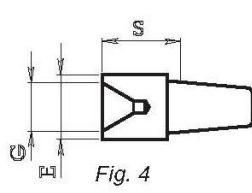
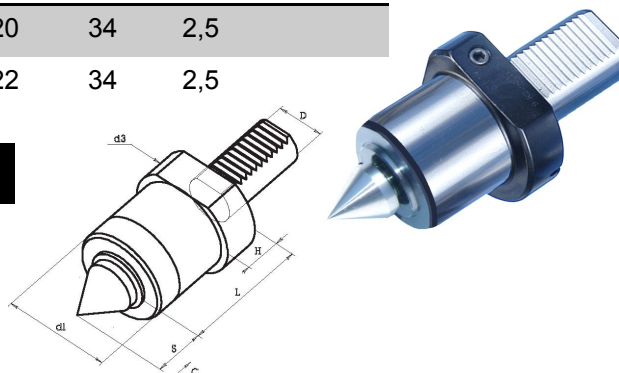


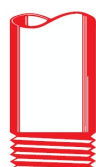
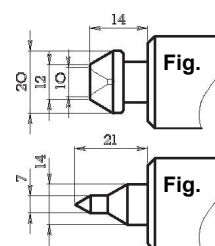
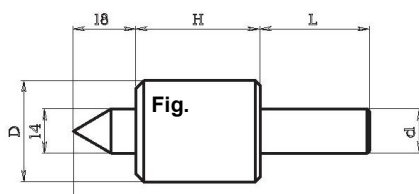
Fig. 4



Varenr.	Fig.	E	S	G
CM172.601	1	28	34	-
CM172.602	2	28	40	7
CM172.602B	2	28	40	12
CM172.603	3	58	36	25
CM172.604	4	28	32	24

## Rullepinol m/kompression, faste spidser & cyl. skaft

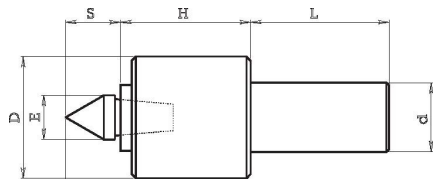
Fig. 1	Fig. 2	Fig. 3	d	D	H	L	C
CM172.208F1	172.208F2	172.208F3	8	32	38,5	35	2
CM172.210F1	172.210F2	172.210F3	10	32	39,5	35	2
CM172.212F1	172.212F2	172.212F3	12	32	38,5	35	2
CM172.214F1	172.214F2	172.214F3	14	32	39,5	35	2
CM172.215F1	172.215F2	172.215F3	15,875	32	39,5	35	2
CM172.216F1	172.216F2	172.216F3	16	32	38,5	35	2
CM172.219F1	172.219F2	172.219F3	19,05	32	38,5	46	2
CM172.220F1	172.220F2	172.220F3	20	32	38,5	46	2
CM172.222F1	172.222F2	172.222F3	22	32	38,5	46	2
CM172.225F1	172.225F2	172.225F3	25	32	38,5	46	2
CM172.226F1	172.226F2	172.226F3	25,40	32	39,5	46	2





**CHIA-MO**  
BOLOGNA - ITALY

## Rullepinol m/kompression, løse spidser & cyl. skaft



Varenr.	d	D	E	H	L	S	C
CM172.308	8	32	14	44	35	16	2
CM172.310	10	32	14	44	35	16	2
CM172.312	12	32	14	44	35	16	2
CM172.314	14	32	14	44	35	16	2
CM172.315	15,785	32	14	44	35	16	2
CM172.316	16	32	14	44	35	16	2
CM172.319	19,05	32	14	44	46	16	2
CM172.320	20	32	14	44	46	16	2
CM172.322	22	32	14	44	46	16	2
CM172.325	25	32	14	44	46	16	2
CM172.326	25,40	32	14	44	46	16	2

## Spidser til rullepinol m/ cyl. skaft eller MK

Varenr.	Fig.	E	S	G	F
CM172.301	1	14	16	-	-
CM172.302	2	14	22	7	-
CM172.303	3	20	12	12	10

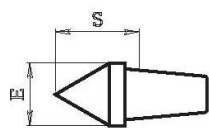


Fig. 1

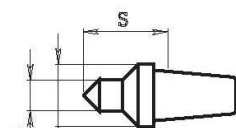


Fig. 2

Varenr.	Fig.	E	S	G
CM172.401	1	18	21	-
CM172.402	2	18	27	7
CM172.403	3	30	21	14
CM172.404	4	26	20	20

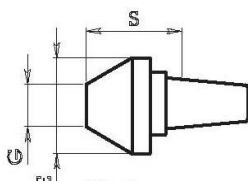


Fig. 3

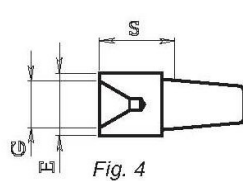


Fig. 4

Varenr.	Fig.	E	S	G
CM172.601	1	28	34	-
CM172.602	2	28	40	7
CM172.602B	2	28	40	12
CM172.603	3	58	36	25
CM172.604	4	28	32	24

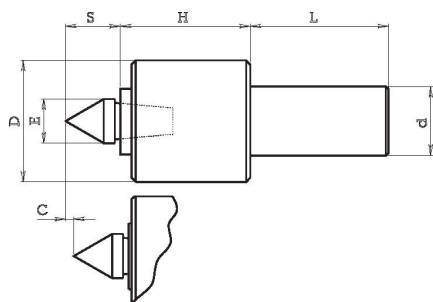


**HAJO TOOL**  
PROFESSIONELT SPECIALVÆRKTØJ



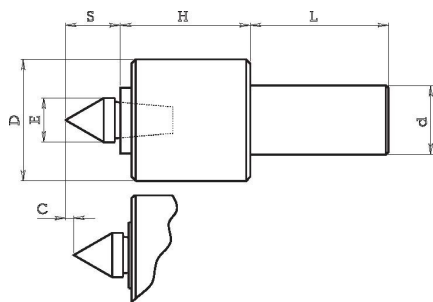
**CHIA-MO**  
BOLOGNA - ITALY

## Rullepinol m/kompression, løse spidser & cyl. skaft eller MK



Varenr.	d	D	E	H	L	S	C
CM172.419	19,05	43	18	43	46	21	3
CM172.420	20	43	18	43	46	21	3
CM172.422	22	43	18	43	46	21	3
CM172.425	25	43	18	43	46	21	3
CM172.426	25,40	43	18	43	46	21	3
CM172.430	30	43	18	43	46	21	3
CM172.431	31,75	43	18	43	46	21	3
CM172.432	32	43	18	43	46	21	3
CM172.400CM2	MK2	43	18	43	69	21	3
CM172.400CM3	MK3	43	18	43	85	21	3

## Rullepinol m/kompression, løse spidser eller cyl. skaft & MK



Varenr.	d	D	E	H	L	S	C
CM172.625	25	58	28	71	70	34	2,5
CM172.626	25,40	58	28	71	70	34	2,5
CM172.632	32	58	28	71	70	34	2,5
CM172.640	40	58	28	71	85	34	2,5
CM172.600CM3	MK3	58	28	71	85	34	2,5
CM172.600CM4	MK4	58	28	71	109	34	2,5



**HAJO TOOL**  
PROFESSIONELT SPECIALVÆRKTØJ