



PINZE TORNIO PLURIMANDRINO MULTISPINDLE LATHE COLLETS



PINZE TIRATE CON FILETTO ESTERNO; PINZE TIRATE CON FILETTO INTERNO; PINZE PER MANDRINO DA RIPRESA; PINZE DI AVANZAMENTO BARRA; BOCCOLE GUIDA BARRA; PINZE PER TORNII PLURIMANDRINO GILDEMEISTER, SCHÜTTE, MORI SAY, WICKMAN, TORNOS.



COLLETS WITH EXTERNAL THREAD; COLLETS FOR PICK-UP SPINDLE; COLLETS WITH INTERNAL THREAD; FEED FINGER COLLETS; BAR GUIDE BUSHES; COLLETS FOR MULTISPINDLE LATHE GILDEMEISTER, SCHÜTTE, MORI SAY, WICKMAN, TORNOS.



**CHIA-MO SRL
VIA CADUTI DI SABBIBOND, 12
40011 ANZOLA DELL'EMILIA
BOLOGNA ITALY**

**TEL +39 051734153
FAX +39 051734958**

**WWW.CHIAMO.IT
INFO@CHIAMO.IT**

**PINZE PER MANDRINO PRINCIPALE**

COLLETS FOR MAIN SPINDLE

ART. (Code)	Macchina (Machine)	Modello (Type)
021.230	GILDEMEISTER	GM16-AC
018.234	GILDEMEISTER	AS16/AS GS GM20-6
022.238	GILDEMEISTER	AS16/20 GS/GM20 V.25
021.241	GILDEMEISTER	GM26 AC
022.253	GILDEMEISTER	AS GS GM32/GM35-6/8
022.264	GILDEMEISTER	AS GS GM42-6
018.331	SCHÜTTE	SG18/AG20
018.332	SCHÜTTE	SE16/SE18
018.333	SCHÜTTE	SF20
022.331	SCHÜTTE	SG/AG20 D>18mm
018.346	SCHÜTTE	VD/SD/SE25/AF/SF26
018.353	SCHÜTTE	SD/VD32/AF/SF32
022.356	SCHÜTTE	A36 PC
018.363	SCHÜTTE	AD40/SF42
022.375	SCHÜTTE	SD/VD50 Fil.Int.
022.541	WICKMAN	1"-6M
022.555	WICKMAN	1"3/8-6M
022.564	WICKMAN	1"3/4-6M
022.425	TORNOS	AS14
018.425	TORNOS	SAS16
018.346	TORNOS	MULTI DECO 26/6
018.234	MORI SAY	6/20
022.541	MORI SAY	6/25 6/26
022.253	MORI SAY	6/32 8/32
018.363	MORI SAY	6/42 8/42
018.146	INDEX	KS/MS25
018.727	DAVENPORT	9/16"
022.623	GRIDLEY	7/16"

PINZE DI AVANZAMENTO CON INSERTO CAMBIO RAPIDO

FEED FINGERS COLLETS WITH QUICK CHANGE INSERT

ART. (Code)	Macchina (Machine)	Modello (Type)
013.222-917	GILDEMEISTER	GM16-AC
013.225-920	GILDEMEISTER	AS16/AS GS GM20-6
013.230-924	GILDEMEISTER	AS16/AS GS GMd25
013.422-917	TORNOS	SAS16

BOCCOLE GUIDA BARRA

GUIDE BUSHES

ART. (Code)	Macchina (Machine)	Modello (Type)
001.228	GILDEMEISTER	AS16/AS GS GM20-6
001.229	GILDEMEISTER	AS16/AS GS GM20-6 Caricatore
001.232	GILDEMEISTER	AS32
001.233	GILDEMEISTER	AS32
001.240	GILDEMEISTER	GM32/6
001.242	GILDEMEISTER	GM35/6
001.422	TORNOS	SAS16

PINZE PER MANDRINO DA RIPRESA

COLLETS FOR PICK-UP SPINDLE

ART. (Code)	Macchina (Machine)	Modello (Type)
021.018	GILDEMEISTER	GM16-AC
022.226	GILDEMEISTER	AS16/AS/GS/SM20-6
022.028	GILDEMEISTER	AS16/AS GS GM20-6
021.028	GILDEMEISTER	GM26-AC
022.039	GILDEMEISTER	AS32/GM32-35-6
021.039	GILDEMEISTER	GM32-35-6/8
021.047	GILDEMEISTER	AS GS GM42-6
010.047	GILDEMEISTER	AS16-20-V25-6 Mandrino Frontale
018.220	GILDEMEISTER	-
021.325	SCHÜTTE	SG18/AG20
022.028	SCHÜTTE	SE16/SE25
021.035	SCHÜTTE	SE25 SF26
022.039	SCHÜTTE	SD32 AD40 SF42
010.114	SCHÜTTE	A36 PC
010.128	SCHÜTTE	-
021.035	WICKMAN	1"-6M
021.047	WICKMAN	1"3/8 - 1"3/4
021.035	TORNOS	MULTI DECO 26.6
022.028	MORI SAY	6/20
021.035	MORI SAY	6/25 6/26 6/32 8/32
021.047	MORI SAY	6/42 8/42

PINZE DI AVANZAMENTO BARRA

FEED FINGERS COLLETS

ART. (Code)	Macchina (Machine)	Modello (Type)
012.222	GILDEMEISTER	GM16-AC
012.225	GILDEMEISTER	AS16/AS GS GM20-6
012.230	GILDEMEISTER	AS16/AS GS GM20d25
012.240	GILDEMEISTER	AS32-6 GM32
012.242	GILDEMEISTER	GM35-6
012.243	GILDEMEISTER	GM35-6 GM35-8
012.251	GILDEMEISTER	AS GS GM42-6
012.325	SCHÜTTE	SE16 SE18
012.335	SCHÜTTE	SD/SE25 AF/SF26
012.343	SCHÜTTE	SD/VD32/AF/SF32
012.351	SCHÜTTE	AD40/SF42
012.531	WICKMAN	1"-6M
012.542	WICKMAN	1"3/8-6M 1"3/8 5M
012.552	WICKMAN	1"3/4-6M 1"3/4 5M
012.418	TORNOS	AS14
012.422	TORNOS	SAS16
012.225	MORI SAY	6/20
012.531	MORI SAY	6/25 6/26
012.240	MORI SAY	6/32 8/32
012.343	MORI SAY	6/32 8/32
012.351	MORI SAY	6/42 8/42
012.335	INDEX	KS/MS25





PINZE DI SERRAGGIO CON FILETTO ESTERNO Tipo 018

COLLETS WITH EXTERNAL THREAD

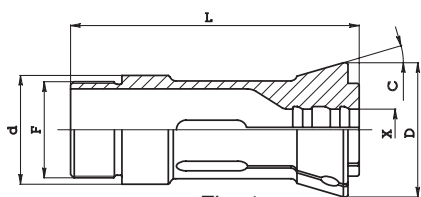


Fig. 1

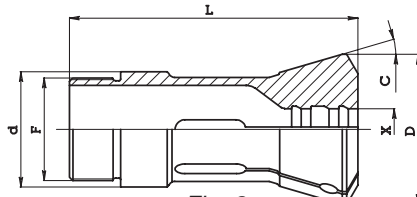


Fig. 2



Code								max bores			machine	
ART.		d	D	L	C	F	Fig.	alesaggio max			Macchina	
								○	⬡	□		
018.146	9039 E	46	60.5	112	15°	40x1.5 Sin	2	26	23	18	INDEX	
018.220		20	22	94	6°	17x0.75 Sin	2	13	11	9	GILDEMEISTER	
018.234	9012 E	34	42	90	16°	30x1 Sin	1	20	17	14	GILDEMEISTER - MORI SAY	
018.331		32	42	84	15°	28x1 Sin	2	18	16	13	SCHÜTTE (Chiav.5)	
018.332	9007 E	32	42	84	15°	28x1 Sin	2	20	17	14	SCHÜTTE (Chiav.6)	
018.333	9016 E	32	41.5	84	15°	30x1 Sin	2	20	17	14	SCHÜTTE	
018.346	9039 E	46	60.3	120	15°	40x1.5 Sin	2	26	23	18	SCHÜTTE - TORNOS	
018.353	9070 E	53	69.3	136.5	15°	47x1.5 Sin	2	32	28	23	SCHÜTTE	
018.363	9112 E	62.9	78.3	157	15°	56x1.5 Sin	2	42	36	29	SCHÜTTE - MORI SAY	
018.425	9021 E	25	35	94	15°	25x1	2	16	14	11	TORNOS	
018.727		26.95	30.19	114.3	15°	26.4x16 fil"	2	13	11	9	DAVENPORT	

PINZE DI SERRAGGIO CON FILETTO INTERNO Tipo 022

COLLETS WITH INTERNAL THREAD

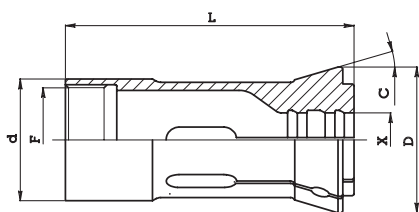


Fig. 1

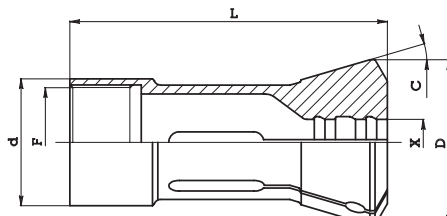
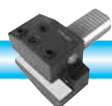


Fig. 2



Code								max bores			machine	
ART.		d	D	L	C	F	Fig.	alesaggio max			Macchina	
								○	⬡	□		
022.028		28	32	64	8°	24x1.5 Sin	2	24	21	17	GILDEMEISTER - SCHÜTTE MORI SAY	
022.039		39	44	90	8°	34x1 Sin	2	32	28	23	GILDEMEISTER - SCHÜTTE	
022.226		26	28.5	80	6°	21.5x0.75	2	20	17	14	GILDEMEISTER	
022.238	9017 E	38	45.5	90	16°	34.5x0.75 Sin	1	25	22	17	GILDEMEISTER	
022.253	9069 E	53	69.4	137	15°	48x1.5 Sin	2	35	31	25	GILDEMEISTER - MORI SAY	
022.264	9115 E	64	80.5	134	15°	59x1.5 Sin	2	42	37	30	GILDEMEISTER	
022.331		32	41.5	84	15°	29x1 Sin Con1:8	2	21	18	14	SCHÜTTE	
022.356		56	72.3	139	15°	52x1.5 Sin	2	46	40	33	SCHÜTTE	
022.375		75	97.8	175	15°	70x1.5 Sin	2	63	55	45	SCHÜTTE	
022.425	9001 E	25	35	75	15°	22x1	2	19	16	13	TORNOS	
022.541	9034 E	41.3	54.5	132	15°	37.8x24 fil" Sin	2	25	22	18	WICKMAN - MORI SAY	
022.555	9072 E	55.47	67	117	15°	50.927x22 fil"	2	36	31	25	WICKMAN	
022.564	9111 E	64.21	78.5	127	15°	60.45x16 fil"	2	44	38	31	WICKMAN	
022.623		23.77	29.3	78.8	15°	20.64x32 fil"	2	11	10	8	GRIDLEY	





PINZE CON AGGANCIAMENTO RAPIDO Tipo 021

QUICK INSTALLATION COLLETS

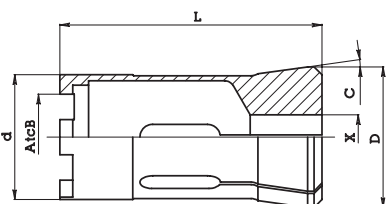


Fig. 1

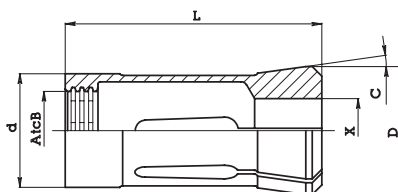


Fig. 2

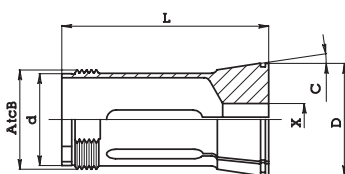


Fig. 3

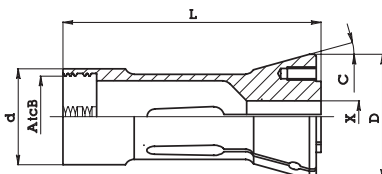


Fig. 4

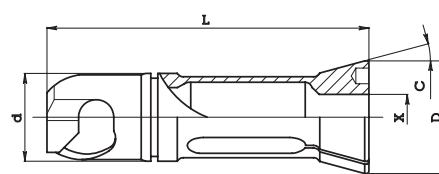
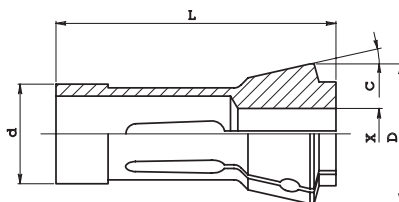


Fig. 5

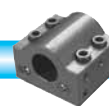
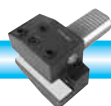
Code								max bores			machine
ART.	d	D	L	C	F	Fig.	alesaggio max			Macchina	
							○	⬡	□		
021.018	18.7	25	51.5	8°	AtcB 21x1.5 60°	3	16	14	11	GILDEMEISTER	
021.026	28	35	88	30°	AtcB 25x2.7 30°	2	24	20	17	-	
021.027	28	32	73	8°	AtcB 25x2.7 30°	2	24	20	17	-	
021.028	28.7	35	64.5	8°	AtcB 31x1.5 60°	3	26	22	18	GILDEMEISTER	
021.029	28.5	32.5	66.8	12°	AtcB D28.1	-	24	20	17	GILDEMEISTER	
021.035	35.5	40	80	8°	AtcB 27x2.7 30°	2	32	27	22	SCHÜTTE - MORI SAY WICKMAN - TORNOS	
021.039	39	44	82	8°	AtcB 11x4	1	32	28	23	GILDEMEISTER	
021.047	47	52.5	73	8°	AtcB 29x2.7 30°	2	42	36	29	GILDEMEISTER - SCHÜTTE MORI SAY - WICKMAN	
021.230	30	39	80.5	15°	AtcB 27.12x1.5 60°	4	16	14	11	GILDEMEISTER	
021.230	30	39	86.5	15°	AtcB 27.12x1.5 60°	4	9	8	8	GILDEMEISTER	
021.241	41	53	106	15°	AtcB 37x2.7 30°	3	26	22	18	GILDEMEISTER	
021.325	25	32.1	91.5	15°	-	5	19	16	13	SCHÜTTE	

PINZE SPINTE Tipo 010

PUSH COLLETS



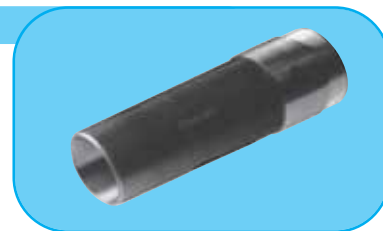
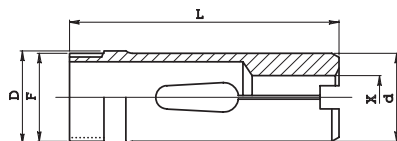
Code					type			max bores			machine
ART.	d	D	L	C	Tipo	Fig.	alesaggio max			Macchina	
							○	⬡	□		
010.047	20	26	60	15°	Mandrino frontale	-	20	17	14	GILDEMEISTER	
010.114	44	54	76	15°	Mandrino pick-up	-	37	32	26	SCHÜTTE	
010.128	59	67	76	15°	Mandrino pick-up	-	52	45	36	SCHÜTTE	





PINZE DI AVANZAMENTO BARRA Tipo 012

FEED FINGERS COLLETS



Code								max bores			machine
ART.		d	D	L	C	F	Fig.	alesaggio max			Macchina
								○	⬡	□	
012.222		20	22	86	-	20x1	-	16	14	11	GILDEMEISTER
012.225	9258 E	25	25	90	-	24x1	-	20	17	14	GILDEMEISTER - MORI SAY
012.230	9288 E	30	30.5	90	-	28x0.75	-	25	22	17	GILDEMEISTER
012.240	9336 E	39.8	41.2	136	-	38x1.5 Sin	-	32	28	23	GILDEMEISTER - MORI SAY
012.242	9335 E	41	41.2	136	-	39x1 Sin	-	35	31	25	GILDEMEISTER
012.243	9335 E	41	41.2	136	-	39x1	-	35	31	25	GILDEMEISTER
012.251	9374 E	50.2	51.5	136	-	48x1.5	-	42	37	30	GILDEMEISTER
012.325	9255 E	23	25	88	-	23x1	-	18	16	13	SCHÜTTE
012.335	9282 E	33	35	118	-	33x1.5	-	26	23	18	SCHÜTTE - INDEX
012.343	9319 E	40	43	130	-	38x1.5	-	32	28	23	SCHÜTTE - MORI SAY
012.351	9372 E	48	51	158	-	48x1.5	-	42	36	29	SCHÜTTE - MORI SAY
012.418	9251 E	17.5	18	70	-	16x0.75	-	14	11	9	TORNOS
012.422	9265 E	20.5	22.8	98	-	20x0.75	-	16	14	11	TORNOS
012.531	9276 E	31	31.9	133	-	30.07x24 fil" Sin	-	25	22	18	WICKMAN - MORI SAY
012.542	9318 E	41.5	42.84	118	-	40.46x24 fil" Sin	-	36	31	25	WICKMAN
012.552	9362 E	51.5	52.21	127	-	49.98x22 fil" Sin	-	44	38	31	WICKMAN

BOCCOLE GUIDA BARRA Tipo 001

GUIDE BUSHES

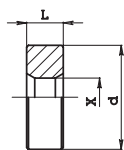


Fig. 1

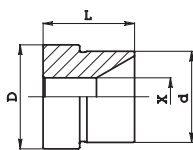
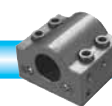
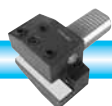


Fig. 2

Code								max bores			machine
ART.	d	D	L	Fig.				alesaggio max			Macchina
								○	⬡	□	
001.228	28.5	-	10	1				25	22	18	GILDEMEISTER
001.229	25	28.5	25	2				20	17	14	GILDEMEISTER
001.232	32.7	35.9	9	2				32	27	22	GILDEMEISTER
001.233	33	43.8	27	2				32	27	22	GILDEMEISTER
001.240	40	47.8	43	2				32	27	22	GILDEMEISTER
001.242	42	47.8	43	2				35	30	24	GILDEMEISTER
001.424	24x1	-	14	1				20	17	14	TORNOS





PINZE DI AVANZAMENTO CON INSERTO CAMBIO RAPIDO Tipo 013

FEED FINGERS COLLETS WITH QUICK CHANGE INSERT

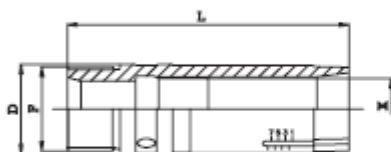


Fig. 1

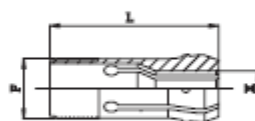
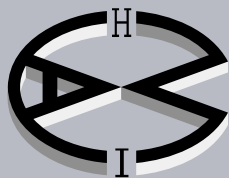
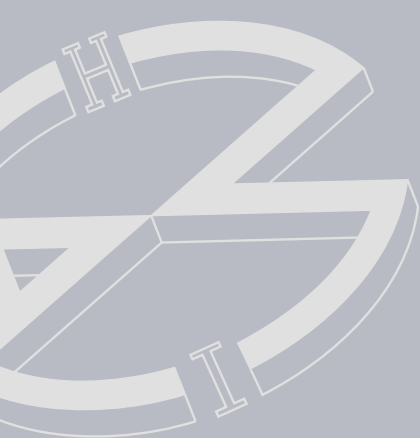


Fig. 2

Code						insert code	max bores			machine
ART.		D	L	F	Fig.	(X) ART. INSERTO	alesaggio max			Macchina
							○	⬡	□	
013.222-917		22	74	20x1	1	013.917	14	12	10	GILDEMEISTER
013.225-920	9258 E	25,5	80	24x1	1	013.920	17	15	12	GILDEMEISTER-MORI SAY
013.230-924	9288 E	30,5	78	28,5x0,75	1	013.924	21	18	14	GILDEMEISTER
013.422-917	9265 E	22,8	85	20x0,75	1	013.917	14	12	10	TORNOS
013.917	RS15	-	48	17x1	2	-	14	12	10	-
013.920	RS20	-	61	20x1	2	-	17	15	12	-
013.924	RS24	-	65	24x1	2	-	21	18	14	-





CHIA-MO



DOVE SIAMO WHERE WE ARE



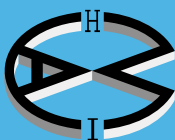
CHIA-MO

Via Caduti di Sabbiuno, 12

40011 Anzola dell'Emilia (Bologna) Italy

Tel. +39 051 734153 - Fax +39 051 734958

info@chiamo.it - www.chiamo.it



CHIA-MO
ITALY



Via Caduti di Sabbiano, 12
40011 Anzola dell'Emilia (Bologna) Italy
Tel. +39 051 734153 - Fax +39 051 734958
info@chiamo.it - www.chiamo.it

