

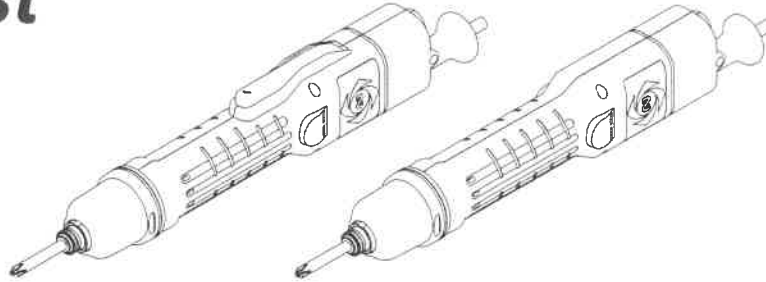
INSTRUCTION MANUAL

Professional tool **ELECTRIC SCREWDRIVER**

delvo

Model: DLV30A/DLV45A/DLV70A-AB Series

Parts List



This document is for the special repair operator.

EN

General users should never disassemble the product.

When repair of the tool or part replacement becomes necessary, contact the retailer where you purchased the tool.

FR

Le présent document est destiné aux techniciens de réparation spécialisés.

Les utilisateurs généraux ne doivent jamais démonter le produit.

Lorsqu'une réparation ou le remplacement de pièces est nécessaire, contactez le revendeur auprès duquel vous avez acheté l'outil.

DE

Dieses Dokument gilt für speziell ausgebildete Wartungstechniker.

Allgemeine Nutzer dürfen das Produkt niemals zerlegen.

Wenn das Werkzeug repariert oder ein Teil ausgetauscht werden muss, wenden Sie sich an den Händler, von dem Sie das Werkzeug erworben haben.

IT

Questo documento è destinato all'operatore addetto alle riparazioni speciali.

Gli utenti generici non devono mai tentare di smontare il prodotto.

Per la riparazione dell'utensile o qualora si renda necessaria la sostituzione di un pezzo, rivolgersi al rivenditore presso il quale è stato acquistato l'utensile.

ES

Este documento es para el operador de reparaciones especiales.

Los usuarios generales no deberán desmontar jamás el producto.

Para la reparación de la herramienta o si resulta necesaria la sustitución de piezas, póngase en contacto con el vendedor del que adquirió la herramienta.

PT

Este documento destina-se ao operador de reparações específico.

Os utilizadores gerais não devem nunca desmontar o produto.

Se for necessário substituir alguma peça ou reparar a ferramenta, entre em contacto com o revendedor onde adquiriu a ferramenta.

SC

本文档专为特约维修操作人员准备。

一般用户严禁拆解产品。

需要维修工具或更换零件时，请联系购买工具的零售商。

JP

本書は、専門修理業者向けの資料です。

一般ユーザーの方は、絶対に製品を分解しないでください。

工具の修理や部品の交換が必要な場合は、お買い求めの販売店にお問い合わせください。

• Please read manual carefully before you attempt to use your tool so that you may use it properly and safely.

• Due to continuous product development/improvement the specifications and configurations in this document are subject to change without prior notice.

Manufactured by.

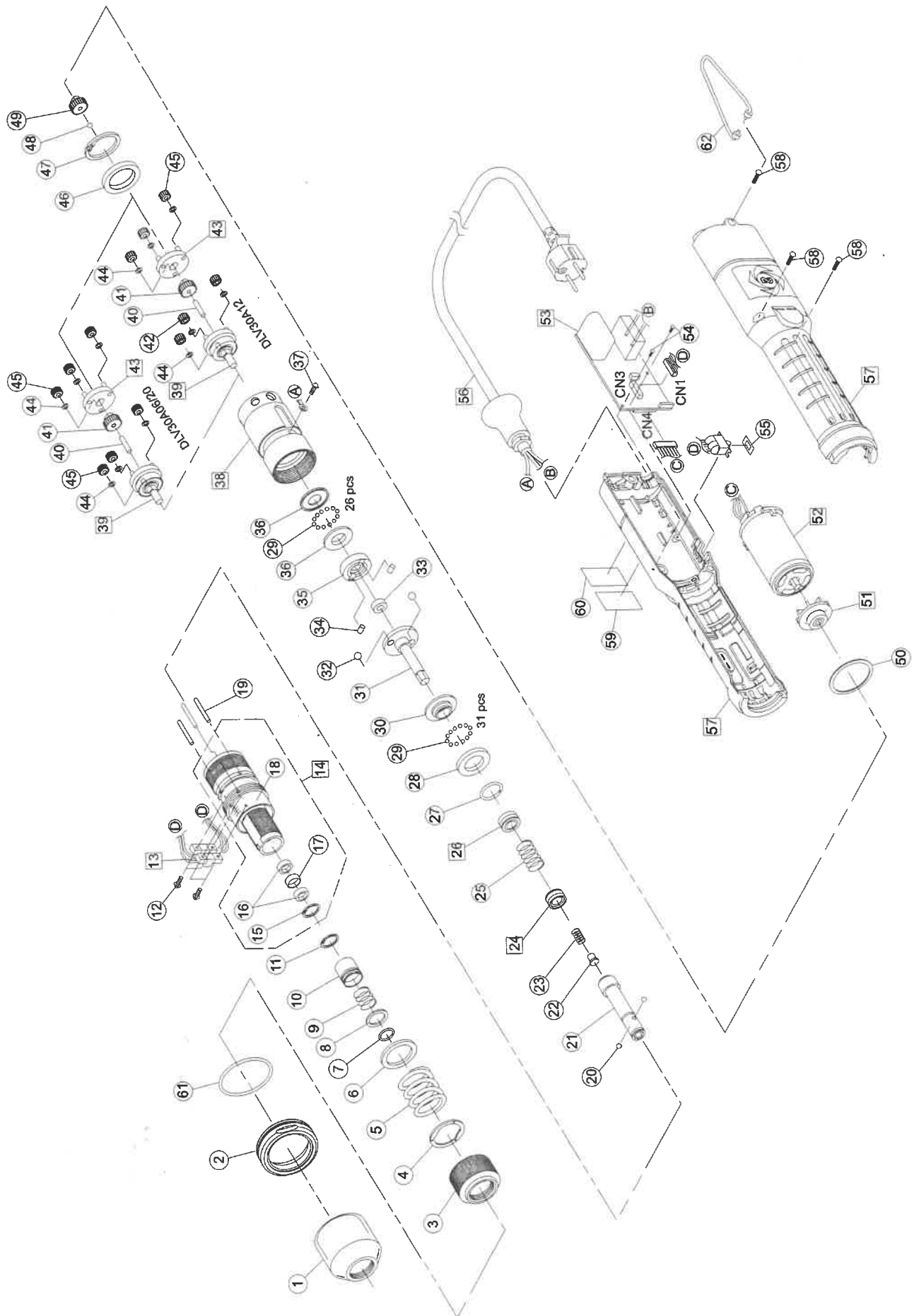
NITTO KOHKI CO., LTD. 9-4, Nakaikagami 2-chome, Ohta-ku, Tokyo, 146-8555, Japan

Tel : +81-3-3755-1111 Fax : +81-3-3753-8791

(Original Instructions)

TV07847-0 09/2017

EXPLODED VIEW (DLV30A06P / DLV30A12P / DLV30A20P)

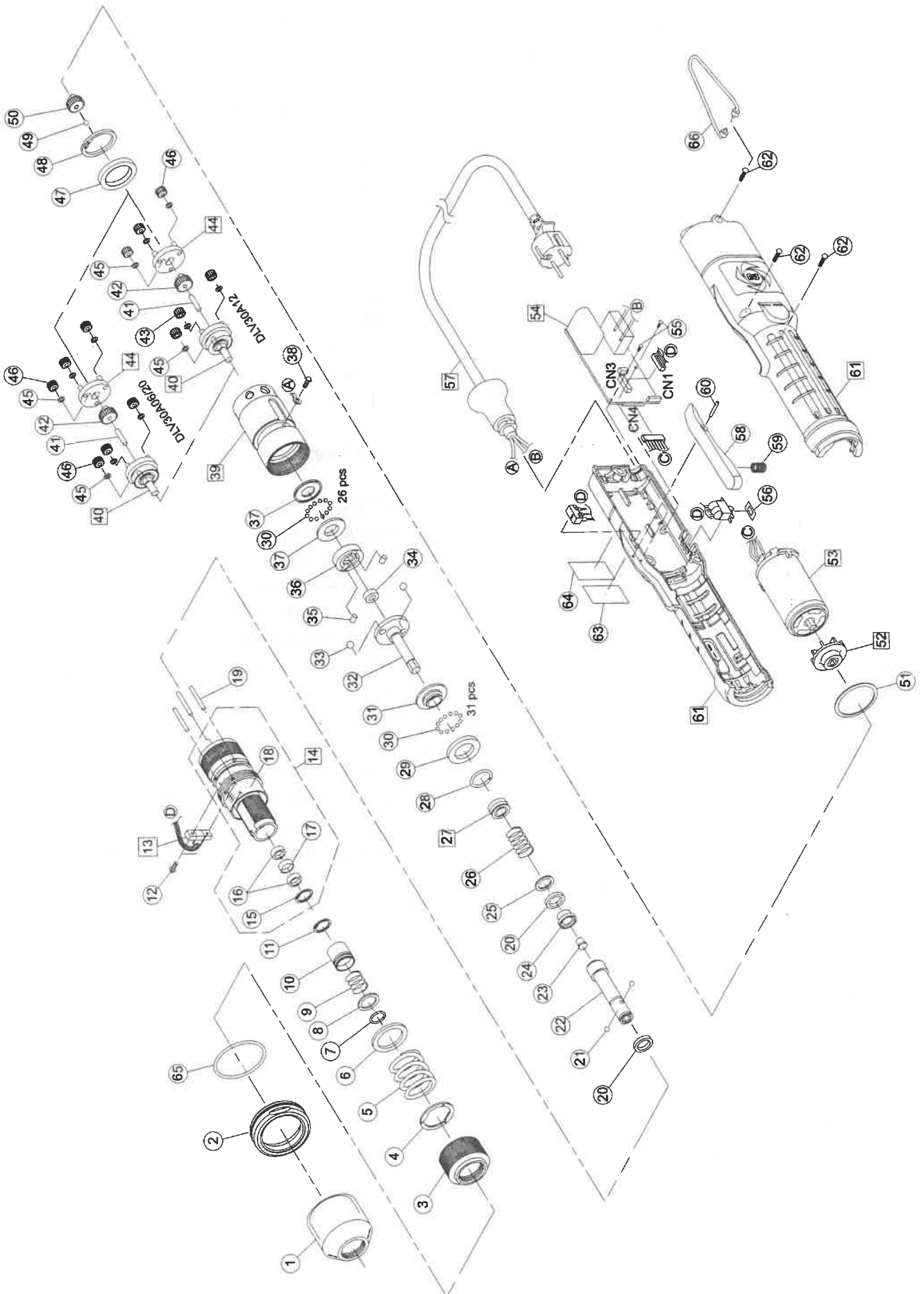


PARTS LIST (DLV30A06P / DLV30A12P / DLV30A20P)

No.	Parts Name	Parts No.	Q'ty
1	Torque Adjustment Ring Cover	TV05143	1
2	Coupling	TV05637	1
3	Torque Adjustment Ring	TV04534	1
4	Spring Plate Assembly	TD04385	1
5	Clutch Spring (High Torque Spring)	TV04593	1
	Clutch Spring (Low Torque Spring: Accessories)	TV05146	1
6	Plate	TV05123	1
7	Stop Ring	TV06619	1
8	Holder Collar	TV05124	1
9	Holder Spring	TV00356	1
10	Holder Clamp	TV05126	1
11	Stop Ring	LP10494	1
12	Screw M2.6×8L	TV04553	4
13	Sensor Assembly	TD08217	1
14	Clutch Case Assembly	TD05195	1
15	Stop Ring	TV05254	1
16	Needle Bearing	TV06101	2
17	Collar	TV06102	1
18	Clutch Case	TV05252	1
19	Roller Pin Dia.2.5×21.8L	TV04543	3
20	Steel Ball Dia. 3 (HEX 5 mm Type)	TP15767	2
	Steel Ball Dia. 2.381 (HEX 6.35 mm Type)	CP20000	2
21	Bit Holder (HEX 5 mm Type)	TV05127	1
	Bit Holder (HEX 6.35 mm Type)	TV05165	1
22	Stopper	TV05256	1
23	Push Spring	TV05255	1
24	Magnet Plate F ASSY	TD07347	1
25	Spring	TV04665	1
26	Brake Magnet Assembly	TD05403	1
27	Stop Ring	TV07367	1
28	Thrust Plate F	TV07363	1
29	Steel Ball Dia. 2	TV00121	57
30	Cam Ring	TV07364	1
31	Cam Guide	TV05145	1
32	Steel Ball Dia. 5	TP15428	2
33	Spacer	TV04751	1
34	Roller Pin Dia. 3.5×5L	TV04538	2
35	Cam	TV04433	1
36	Thrust Plate	TV07366	2
37	Screw M2.6×4L	TV00438	1
38	Gear Case Assembly (DLV30A12)	TD05043	1
	Gear Case Assembly (DLV30A06/ DLV30A20)	TD05075	1
39	Gear Base A Assembly (DLV30A06)	TD04386	1
	Gear Base A Assembly (DLV30A12)	TD05070	1
	Gear Base A Assembly (DLV30A20)	TD05071	1
40	Roller Pin Dia. 3×13.8L	TV04592	1

No.	Parts Name	Parts No.	Q'ty
41	Spindle Gear 11 (DLV30A06)	TV06023	1
	Spindle Gear 19 (DLV30A12)	TV05125	1
	Spindle Gear 23 (DLV30A20)	TV05258	1
42	Idle Gear 14 (DLV30A12)	TV07342	3
43	Gear Base B Assembly (DLV30A06)	TD04135	1
	Gear Base B Assembly (DLV30A12)	TD05110	1
	Gear Base B Assembly (DLV30A20)	TD05111	1
44	Spacer	TV00147	6
45	Idle Gear 19 (DLV30A06)	TV07344	6
	Idle Gear 17 (DLV30A12)	TV07343	3
	Idle Gear 13 (DLV30A20)	TV07335	6
46	Washer	TV04289	1
47	Stop Ring	TV00140	1
48	Steel Ball Dia.3	TP15767	1
49	Motor Gear 11 (DLV30A06)	TV07347	1
	Motor Gear 13 (DLV30A12)	TV07346	1
	Motor Gear 23 (DLV30A20)	TV07345	1
50	Washer	TV04670	1
51	Fan Assembly	TD08156	1
52	Motor Assembly	TD05013	1
53	Control Base Assembly	TD08694	1
54	Tapping Screw 2×4L	TV07410	2
55	Insulated Film for Switch	TV07409	1
56	Power Cord Assembly	TD08849	1
57	Frame Handle AB Assembly	TD08160	1
58	Screw M3×12L	TV02746	3
59	Warning Plate		1
60	Rating Plate		1
61	Rubber Ring Blue (DLV30A12)	TV05638	1
	Rubber Ring Red (DLV30A20)	TV05639	1
	Rubber Ring Yellow (DLV30A06)	TV05640	1
62	Suspension Bail	TD08220	1

EXPLODED VIEW (DLV30A06L / DLV30A12L / DLV30A20L)

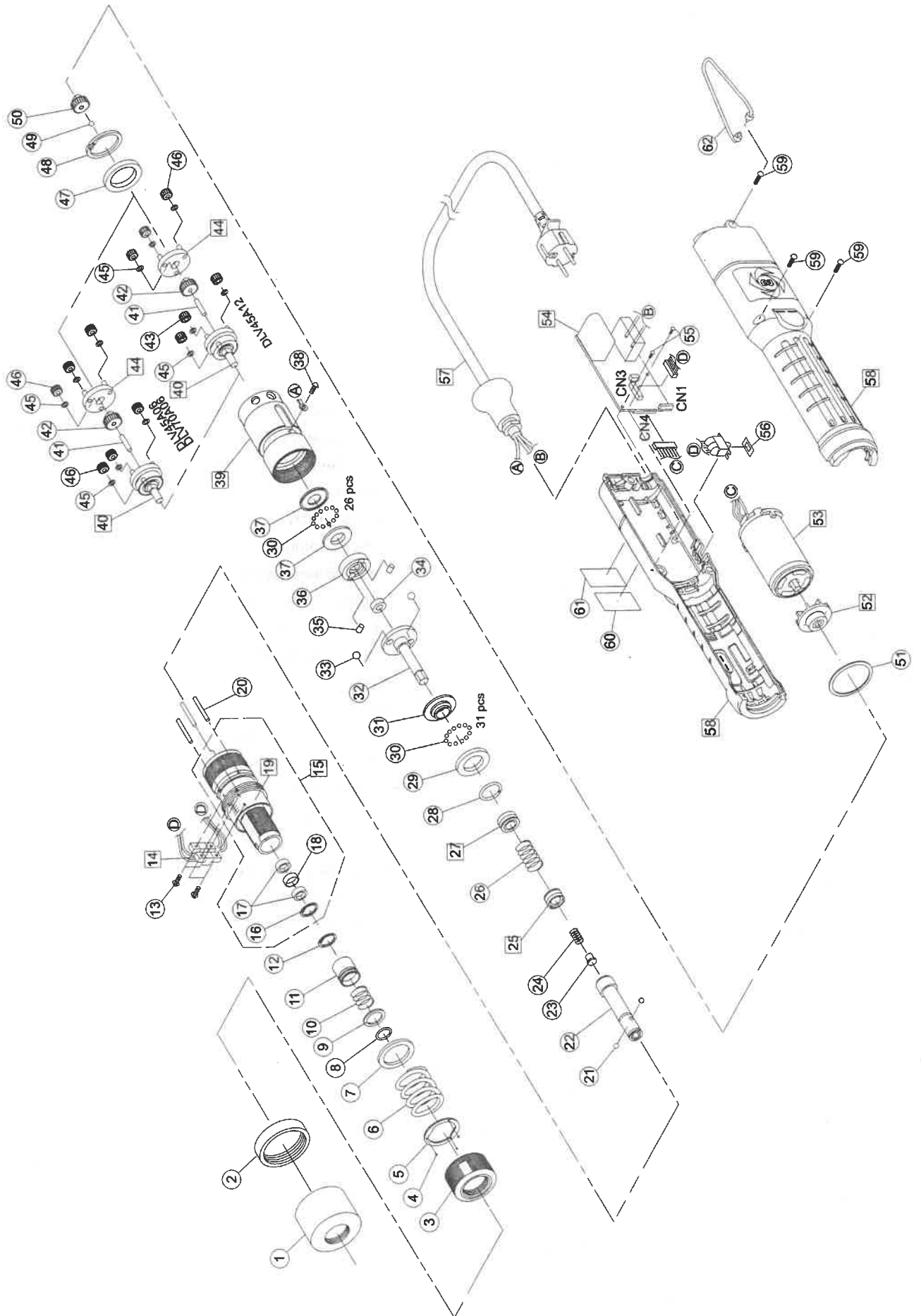


PARTS LIST (DLV30A06L / DLV30A12L / DLV30A20L)

No.	Parts Name	Parts No.	Q'ty
1	Torque Adjustment Ring Cover	TV05143	1
2	Coupling	TV05637	1
3	Torque Adjustment Ring	TV04534	1
4	Spring Plate Assembly	TD04385	1
5	Clutch Spring (High Torque Spring)	TV04593	1
	Clutch Spring (Low Torque Spring: Accessories)	TV05146	1
6	Plate	TV05123	1
7	Stop Ring	TV06619	1
8	Holder Collar	TV05124	1
9	Holder Spring	TV00356	1
10	Holder Clamp	TV05126	1
11	Stop Ring	LP10494	1
12	Screw M2.6×8L	TV04553	2
13	Sensor Assembly	TD08225	1
14	Clutch Case Assembly	TD05195	1
15	Stop Ring	TV05254	1
16	Needle Bearing	TV06101	2
17	Collar	TV06102	1
18	Clutch Case	TV05252	1
19	Roller Pin Dia.2.5X21.8L	TV04543	3
20	Spacer	TV05420	2
21	Steel Ball Dia. 3 (HEX 5 mm Type)	TP15767	2
	Steel Ball Dia. 2.381 (HEX 6.35 mm Type)	CP20000	2
22	Bit Holder (HEX 5 mm Type)	TV05127	1
	Bit Holder (HEX 6.35 mm Type)	TV05165	1
23	Stopper	TV05256	1
24	Magnet Plate F	TV04659	1
25	Spacer	TV04545	1
26	Spring	TV04665	1
27	Brake Magnet Assembly	TD05403	1
28	Stop Ring	TV07367	1
29	Thrust Plate F	TV07363	1
30	Steel Ball Dia. 2	TV00121	57
31	Cam Ring	TV07364	1
32	Cam Guide	TV05145	1
33	Steel Ball Dia. 5	TP15428	2
34	Spacer	TV04751	1
35	Roller Pin Dia. 3.5×5L	TV04538	2
36	Cam	TV04433	1
37	Thrust Plate	TV07366	2
38	Screw M2.6×4L	TV00438	1
39	Gear Case Assembly (DLV30A12)	TD05043	1
	Gear Case Assembly (DLV30A06/ DLV30A20)	TD05075	1
40	Gear Base A Assembly (DLV30A06)	TD04386	1
	Gear Base A Assembly (DLV30A12)	TD05070	1
	Gear Base A Assembly (DLV30A20)	TD05071	1
41	Roller Pin Dia. 3×13.8L	TV04592	1

No.	Parts Name	Parts No.	Q'ty
42	Spindle Gear 11 (DLV30A06)	TV06023	1
	Spindle Gear 19 (DLV30A12)	TV05125	1
43	Spindle Gear 23 (DLV30A20)	TV05258	1
	Idle Gear 14 (DLV30A12)	TV07342	3
44	Gear Base B Assembly (DLV30A06)	TD04135	1
	Gear Base B Assembly (DLV30A12)	TD05110	1
	Gear Base B Assembly (DLV30A20)	TD05111	1
45	Spacer	TV00147	6
46	Idle Gear 19 (DLV30A06)	TV07344	6
	Idle Gear 17 (DLV30A12)	TV07343	3
	Idle Gear 13 (DLV30A20)	TV07335	6
47	Washer	TV04289	1
48	Stop Ring	TV00140	1
49	Steel Ball Dia. 3	TP15767	1
50	Motor Gear 11 (DLV30A06)	TV07347	1
	Motor Gear 13 (DLV30A12)	TV07346	1
	Motor Gear 23 (DLV30A20)	TV07345	1
51	Washer	TV04670	1
52	Fan Assembly	TD08156	1
53	Motor Assembly	TD05013	1
54	Control Base Assembly	TD08694	1
55	Tapping Screw 2×4L	TV07410	2
56	Insulated Film for Switch	TV07409	1
57	Power Cord Assembly	TD08849	1
58	Lever	TV07542	1
59	Spring	TV00235	1
60	Roller Pin Dia. 2×13.8L	TV07420	1
61	Frame Handle AB Assembly	TD08180	1
62	Screw M3×12L	TV02746	3
63	Warning Plate		1
64	Rating Plate		1
65	Rubber Ring Blue (DLV30A12)	TV05638	1
	Rubber Ring Red (DLV30A20)	TV05639	1
	Rubber Ring Yellow (DLV30A06)	TV05640	1
66	Suspension Bail	TD08220	1

EXPLODED VIEW (DLV45A06P / DLV45A12P / DLV70A06P)

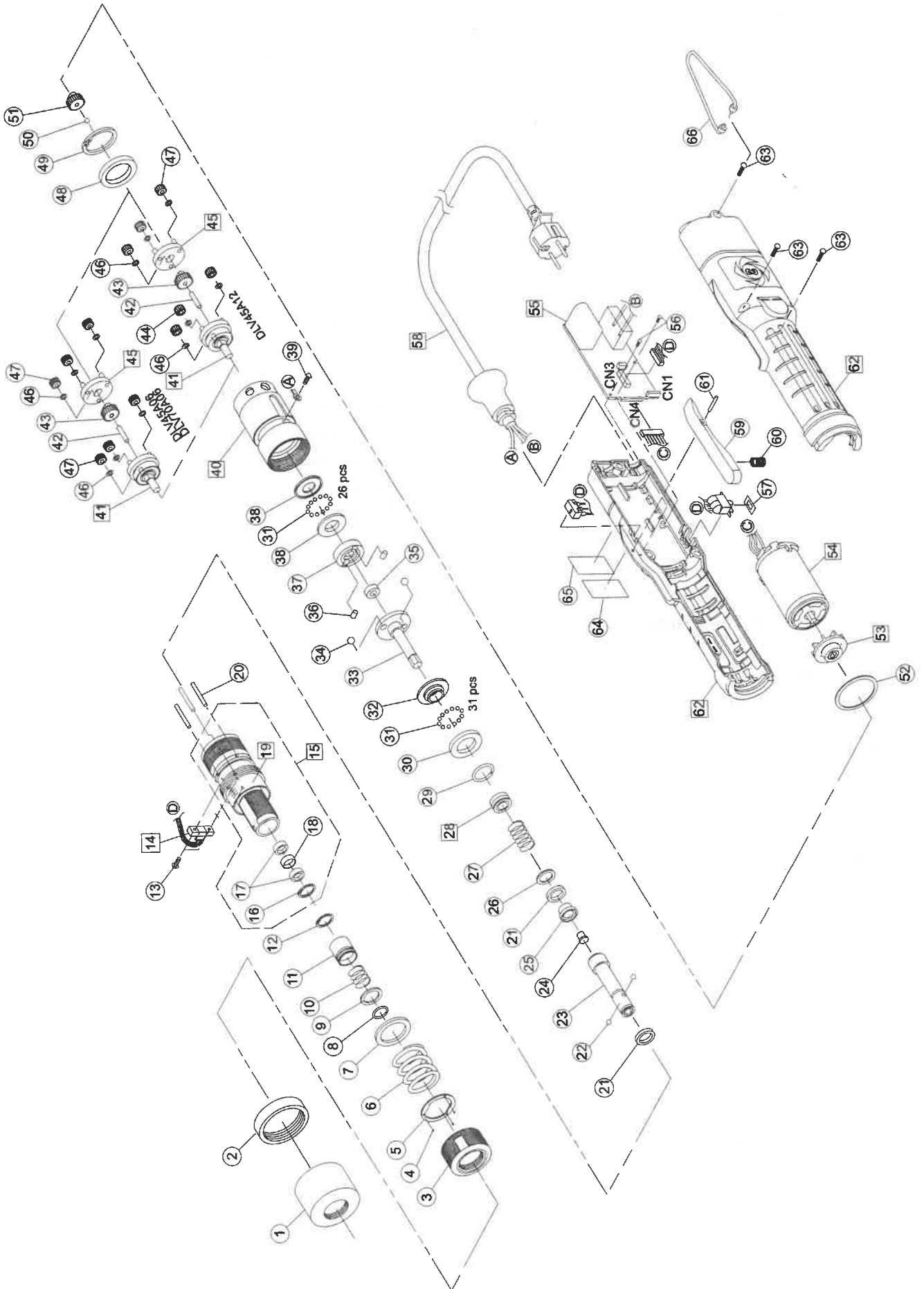


PARTS LIST (DLV45A06P / DLV45A12P / DLV70A06P)

No.	Parts Name	Parts No.	Q'ty
1	Torque Adjustment Ring Cover	TV05705	1
2	Coupling	TV06062	1
3	Torque Adjustment Ring	TV05703	1
4	Steel Ball Dia. 1.588	TP17155	3
5	Spring Plate	TV05702	1
6	Clutch Spring (DLV45A)	TV05717	1
	Clutch Spring (DLV70A)	TV05718	1
7	Plate	TV05700	1
8	Stop Ring	TV06619	1
9	Holder Collar	TV05124	1
10	Holder Spring	TV00356	1
11	Holder Clamp	TV05126	1
12	Stop Ring	LP10494	1
13	Screw M2.6×8L	TV04553	4
14	Sensor Assembly	TD08217	1
15	Clutch Case Assembly	TD06619	1
16	Stop Ring	TV05254	1
17	Needle Bearing	TV06101	2
18	Collar	TV06102	1
19	Clutch Case Sub Assembly	TD06998	1
20	Roller Pin Dia. 2.5×21.8L	TV04543	3
21	Steel Ball Dia. 2.381 (HEX 6.35 mm Type)	CP20000	2
22	Bit Holder (HEX 6.35 mm Type)	TV05165	1
23	Stopper	TV05256	1
24	Push Spring	TV05255	1
25	Magnet Plate F ASSY	TD07347	1
26	Spring	TV04665	1
27	Brake Magnet Assembly	TD05403	1
28	Stop Ring	TV07367	1
29	Thrust Plate F	TV07363	1
30	Steel Ball Dia.2	TV00121	57
31	Cam Ring	TV07365	1
32	Cam Guide	TV05699	1
33	Steel Ball Dia. 5	TP15428	2
34	Spacer	TV04751	1
35	Roller Pin Dia. 3.5×5L	TV04538	2
36	Cam	TV04433	1
37	Thrust Plate	TV07366	2
38	Screw M2.6×4L	TV00438	1
39	Gear Case Assembly (DLV45A12)	TD05043	1
	Gear Case Assembly (DLV45A06/ DLV70A06)	TD05075	1
40	Gear Base A Assembly (DLV45A12)	TD05932	1
	Gear Base A Assembly (DLV45A06/ DLV70A06)	TD05933	1
41	Roller Pin Dia.3X13.8L	TV04592	1
42	Spindle Gear 19 (DLV45A12)	TV05125	1
	Spindle Gear 11 (DLV45A06/ DLV70A06)	TV06023	1

No.	Parts Name	Parts No.	Q'ty
43	Idle Gear 14 (DLV45A12)	TV07342	3
44	Gear Base B Assembly (DLV45A12)	TD05110	1
	Gear Base B Assembly (DLV45A06/ DLV70A06)	TD04135	1
45	Spacer	TV00147	6
46	Idle Gear 17 (DLV45A12)	TV07343	3
	Idle Gear 19 (DLV45A06/DLV70A06)	TV07344	6
47	Washer	TV04289	1
48	Stop Ring	TV00140	1
49	Steel Ball Dia.3	TP15767	1
50	Motor Gear 13 (DLV45A12)	TV07346	1
	Motor Gear 11 (DLV45A06/ DLV70A06)	TV07347	1
51	Washer	TV04670	1
52	Fan Assembly	TD08156	1
53	Motor Assembly	TD05013	1
54	Control Base Assembly	TD08694	1
55	Tapping Screw 2X4L	TV07410	2
56	Insulated Film for Switch	TV07409	1
57	Power Cord Assembly	TD08849	1
58	Frame Handle AB Assembly	TD08160	1
59	Screw M3X12L	TV02746	3
60	Warning Plate		1
61	Rating Plate		1
62	Suspension Bail	TD08220	1

EXPLODED VIEW (DLV45A06L / DLV45A12L / DLV70A06L)



PARTS LIST (DLV45A06L / DLV45A12L / DLV70A06L)

No.	Parts Name	Parts No.	Q'ty
1	Torque Adjustment Ring Cover	TV05705	1
2	Coupling	TV06062	1
3	Torque Adjustment Ring	TV05703	1
4	Steel Ball Dia. 1.588	TP17155	3
5	Spring Plate	TV05702	1
6	Clutch Spring (DLV45A)	TV05717	1
	Clutch Spring (DLV70A)	TV05718	1
7	Plate	TV05700	1
8	Stop Ring	TV06619	1
9	Holder Collar	TV05124	1
10	Holder Spring	TV00356	1
11	Holder Clamp	TV05126	1
12	Stop Ring	LP10494	1
13	Screw M2.6×8L	TV04553	4
14	Sensor Assembly	TD08217	1
15	Clutch Case Assembly	TD06619	1
16	Stop Ring	TV05254	1
17	Needle Bearing	TV06101	2
18	Collar	TV06102	1
19	Clutch Case Sub Assembly	TD06998	1
20	Roller Pin Dia. 2.5×21.8L	TV04543	3
21	Spacer	TV05420	2
22	Steel Ball Dia. 2.381 (HEX 6.35 mm Type)	CP20000	2
23	Bit Holder (HEX 6.35 mm Type)	TV05165	1
24	Stopper	TV05256	1
25	Magnet Plate F	TV04659	1
26	Spacer	TV04545	1
27	Spring	TV04665	1
28	Brake Magnet Assembly	TD05403	1
29	Stop Ring	TV07367	1
30	Thrust Plate F	TV07363	1
31	Steel Ball Dia.2	TV00121	57
32	Cam Ring	TV07365	1
33	Cam Guide	TV05699	1
34	Steel Ball Dia. 5	TP15428	2
35	Spacer	TV04751	1
36	Roller Pin Dia. 3.5×5L	TV04538	2
37	Cam	TV04433	1
38	Thrust Plate	TV07366	2
39	Screw M2.6×4L	TV00438	1
40	Gear Case Assembly (DLV45A12)	TD05043	1
	Gear Case Assembly (DLV45A06/ DLV70A06)	TD05075	1
41	Gear Base A Assembly (DLV45A12)	TD05932	1
	Gear Base A Assembly (DLV45A06/ DLV70A06)	TD05933	1
42	Roller Pin Dia. 3×13.8L	TV04592	1

No.	Parts Name	Parts No.	Q'ty
43	Spindle Gear 19 (DLV45A12)	TV05125	1
	Spindle Gear 11 (DLV45A06/ DLV70A06)	TV06023	1
44	Idle Gear 14 (DLV45A12)	TV07342	3
45	Gear Base B Assembly (DLV45A12)	TD05110	1
	Gear Base B Assembly (DLV45A06/ DLV70A06)	TD04135	1
46	Spacer	TV00147	6
47	Idle Gear 17 (DLV45A12)	TV07343	3
	Idle Gear 19 (DLV45A06/DLV70A06)	TV07344	6
48	Washer	TV04289	1
49	Stop Ring	TV00140	1
50	Steel Ball Dia. 3	TP15767	1
51	Motor Gear 13 (DLV45A12)	TV07346	1
	Motor Gear 11 (DLV45A06/ DLV70A06)	TV07347	1
52	Washer	TV04670	1
53	Fan Assembly	TD08156	1
54	Motor Assembly	TD05013	1
55	Control Base Assembly	TD08694	1
56	Tapping Screw 2×4L	TV07410	2
57	Insulated Film for Switch	TV07409	1
58	Power Cord Assembly	TD08849	1
59	Lever	TV07542	1
60	Spring	TV00235	1
61	Roller Pin Dia. 2×13.8L	TV07420	1
62	Frame Handle AB Assembly	TD08180	1
63	Screw M3×12L	TV02746	3
64	Warning Plate		1
65	Rating Plate		1
66	Suspension Bail	TD08220	1



■ Overseas Affiliates / Offices

NITTO KOHKI U.S.A., INC.

46 Chancellor Drive, Roselle, IL 60172, U.S.A.
Tel: +1-630-924-9393 Fax: +1-630-924-0303

NITTO KOHKI EUROPE GMBH

Gottlieb-Daimler-Str. 10, 71144 Steinenbronn, Germany
Tel: +49-7157-989555-0 Fax: +49-7157-989555-40

NITTO KOHKI EUROPE GMBH UK BRANCH

Unit A5, Langham Park Industrial Estate, Maple Road, Castle
Donington, Derbyshire DE74 2UT, U.K.
Tel: +44-1332-653800 Fax: +44-1332-987273

NITTO KOHKI AUSTRALIA PTY.LTD.

77 Brandl Street, Eight Mile Plains, Queensland 4113, Australia
Tel: +61-7-3340-4600 Fax: +61-7-3340-4640

NITTO KOHKI (SHANGHAI) CO., LTD.

Room1506, Suite C, Orient International Plaza, No.85
Loushanguan Road, Shanghai 200336, China
Tel: +86-21-6415-3935 Fax: +86-21-6472-6957

NITTO KOHKI (SHANGHAI) CO.,LTD. Shenzhen Branch

2005C Shenzhen ICC Tower, Fuhuasanlu 168, Futian District,
Shenzhen, Guangdong 518048, China
Tel: +86-755-8375-2185 Fax: +86-755-8375-2187

NITTO KOHKI CO., LTD., Singapore Branch

10 Ubi Crescent #01-62, Ubi Techpark Lobby D, Singapore
408564
Tel: +65-6227-5360 Fax: +65-6227-0192

NITTO KOHKI CO., LTD., Bangkok Representative Office

M&A Business Center, Q-House Convent Bldg., 38 Convent
Rd., Silom, Bangrak, Bangkok 10500, Thailand
Tel: +66-2632-0307 Fax: +66-2632-0308

NITTO KOHKI CO.,LTD. India Liaison Office

3rd Floor, Building No.9-A DLF Cyber City, Phase-III,
Gurgaon, Haryana 122002, India
Tel: +91-124-454-5031 Fax: +65-6227-0192

NITTO KOHKI CO.,LTD. Mexico Representative Office

OF1109 Torre Corporativo 1 Piso 11 Central Park Armando
Birlain Shaffler #2001 Col Centro Sur, Queretaro, Qro,
C.P.76090, Mexico
Tel: +52-442-290-1234