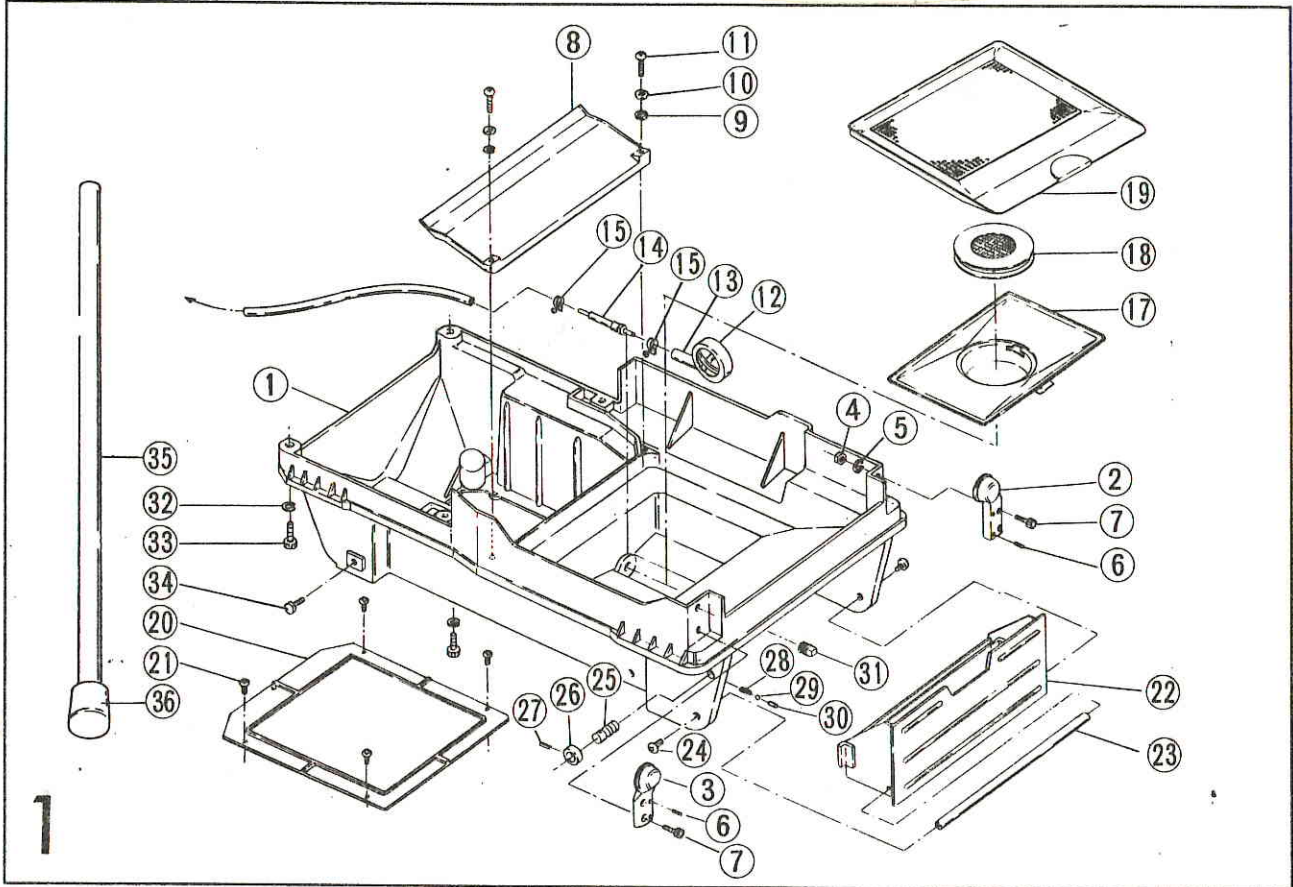
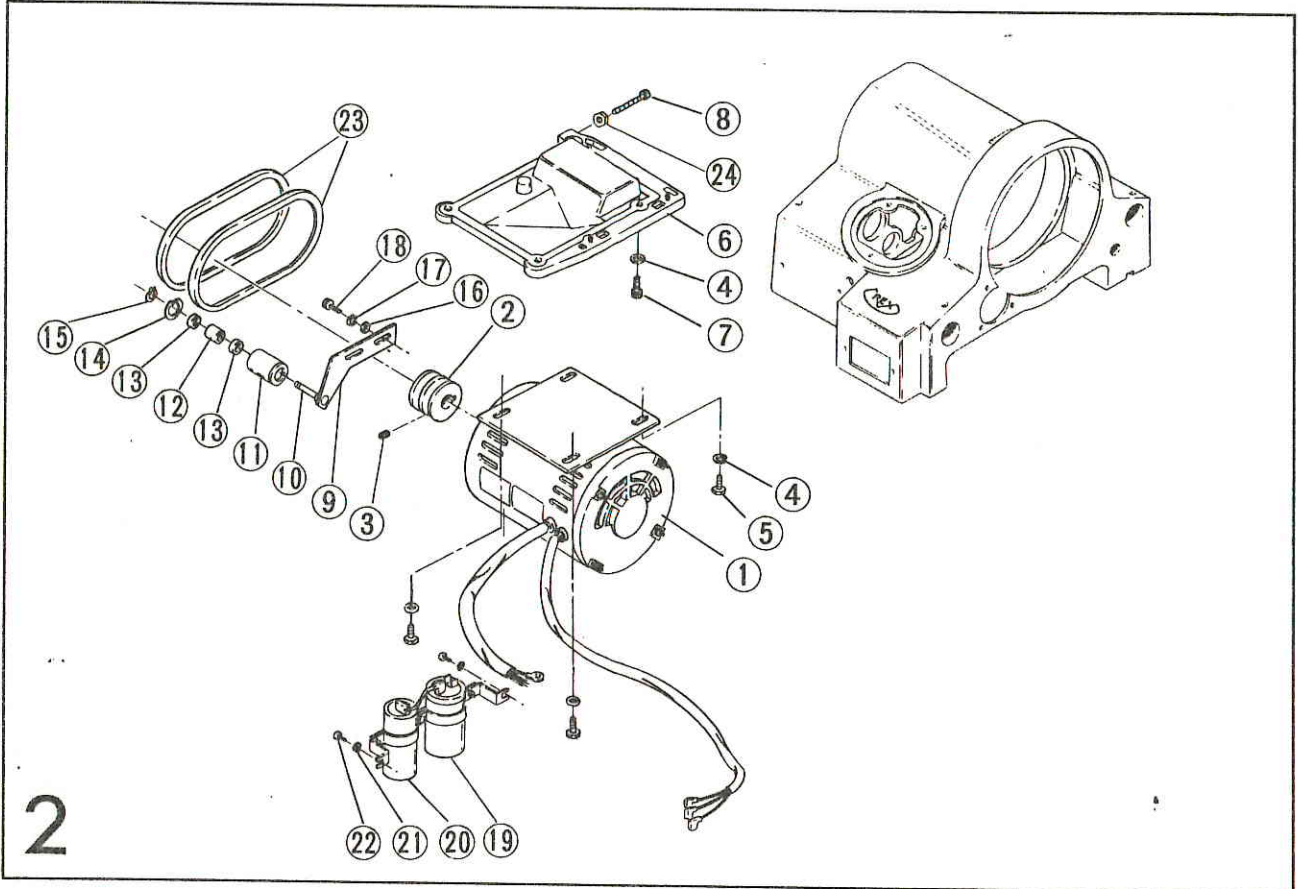


# REX N100A (Base)



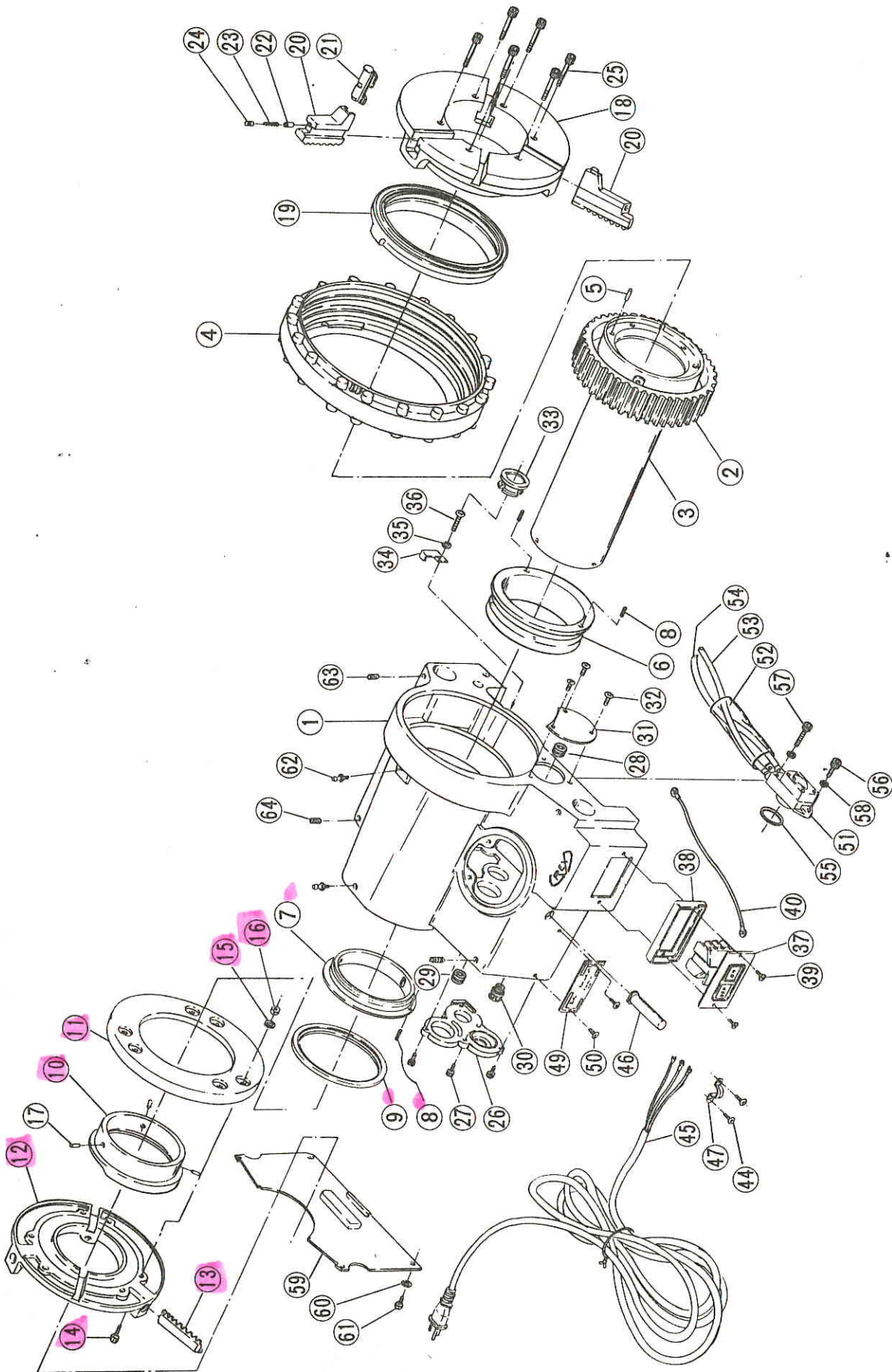
No.	Part No.	Part Name	Set	
1	J 0 0 1	Base	1	
2	J 0 0 2	Support (Right)	1	
3	J 0 0 3	Support (Left)	1	
4		Nut (M8)	4	HF 4832 8
5		Spring washer (φ8)	4	HF 1265 8
6		Roll pin (φ6 × 30)	4	HF 1590630
7		Torx socket head cap screw (M8 × 25)	4	DK
8	J 0 0 6	Base cover	1	
9		Washer (φ5)	2	DK
10		Spring washer (φ5)	2	HF 1265 5
11		Round head machine screw (M5 × 25)	2	HF 9041 525
12	N 0 4 8	Strainer	1	Set Tapping screw (M5 × 10)
13		Oil intake line suction tube (A)	1	
14	J 0 1 5	Nipple	1	
15		Pipe band	2	
16				
17	J 0 0 4	Tank upper cover	1	
18	J 0 0 5	Upper cover strainer cap	1	
19	J 0 0 7	Scrap receiver	1	
20	J 0 0 8	Bottom cover	1	
21		Round head machine screw (M5 × 8)	4	HF 9041 58
22	J 0 1 0	Built-in tool box	1	
23	J 0 1 1	Tool box shaft	1	
24		Truss screw (M8 × 20)	2	
25	J 0 1 2	Stopper pin A	1	
26	J 0 1 3	Stopper pin B	1	
27		Roll pin (φ4 × 20)	1	HF 1590 420
28	7 7 5 2	Spring (φ5 × 12)	1	
29		Steel ball (φ5)	1	HK 5
30	1 0 3 6	Oil joint pin	1	
31		Drain plug	1	
32		Spring washer (φ10)	4	HF 1265 10
33		Socket head cap screw (M10 × 40)	4	HF 696 1040
34		Hexagon head cap screw (M10 × 30)	4	
35	J 0 4 1	Pipe stand	4	
36	N 1 2 5	Leg cap	4	
37				
38				
39				
40				

# REX N100A (Motor)



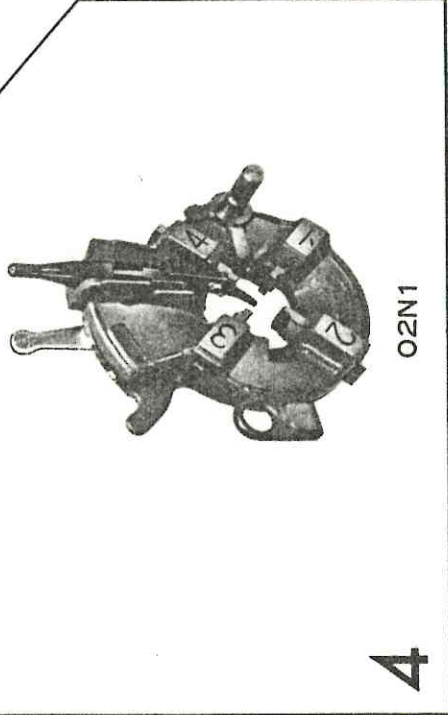
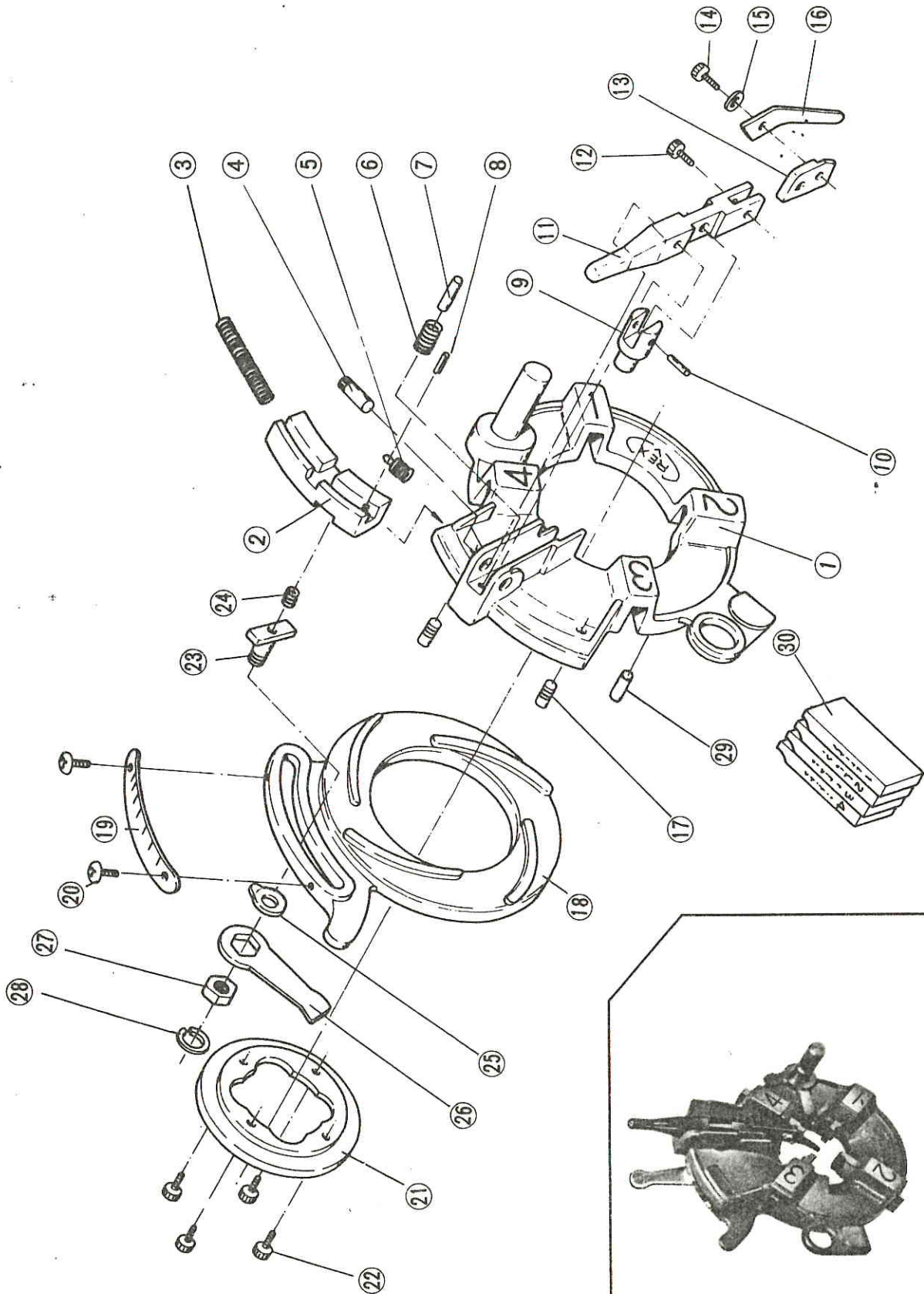
No.	Part No.	Part Name	Set	
1	J 0 2 9	Condenser motor (0.75kw 110/220V)	1	Set 4931 Motor pulley
	J 0 2 9	Condenser motor (1.0kw 110/220V)	1	Set T066 Motor pulley
	J 0 3 1	Three phase induction motor (1.5kw 380V)	1	Set J022 Motor pulley
2				
3		Hex-socket set screw (M8 × 8)	1	HF 710 88
4		Spring washer (φ10)	8	HF 1265 10
5		Hexagon head cap screw (M10 × 20)	4	HF 690 1020
6	J 0 2 0	Motor holder	1	
7		Socket head cap screw (M10 × 25)	4	HF 690 1025
8		Socket head cap screw (M8 × 60)	1	- 696 860
9	J 0 2 3	Tension pulley adjustment mounting	1	} J019 Set
10	J 0 2 4	Tension pulley adjustment pin	1	
11	J 0 2 5	Tension pulley (Condenser motor)	1	
	J 0 2 7	Tension pulley (Three phase induction motor)	1	
12	J 0 2 6	Tension pulley bearing collar	1	
13	J 3 0 3	Bearing (#6001ZZ)	2	HR 600 122
14		Snap ring (in side φ28)	1	
15		Snap ring (out side φ12)	1	
16		Washer (φ8)	2	OK
17		Spring washer (φ8)	2	HK 1265 8
18		Socket head cap screw (M8 × 20)	2	HF 690 820
19	A 5 4 9	Drive condenser	1	} For condenser motor
20	A 5 4 8	Starter condenser	1	
21		Washer (φ5)	2	
22		Round head machine screw (M5 × 8)	2	HF 904 158
23		V-belt (Condenser motor) (A-23)	2	
		V-belt (Three phase induction motor) (A-24)	2	
		Nut (M8)	1	
24				
25				
26				
27				
28				
29				
30				
31				
32				
33				
34				
35				
36				

# REX N100A (Main shaft stock)



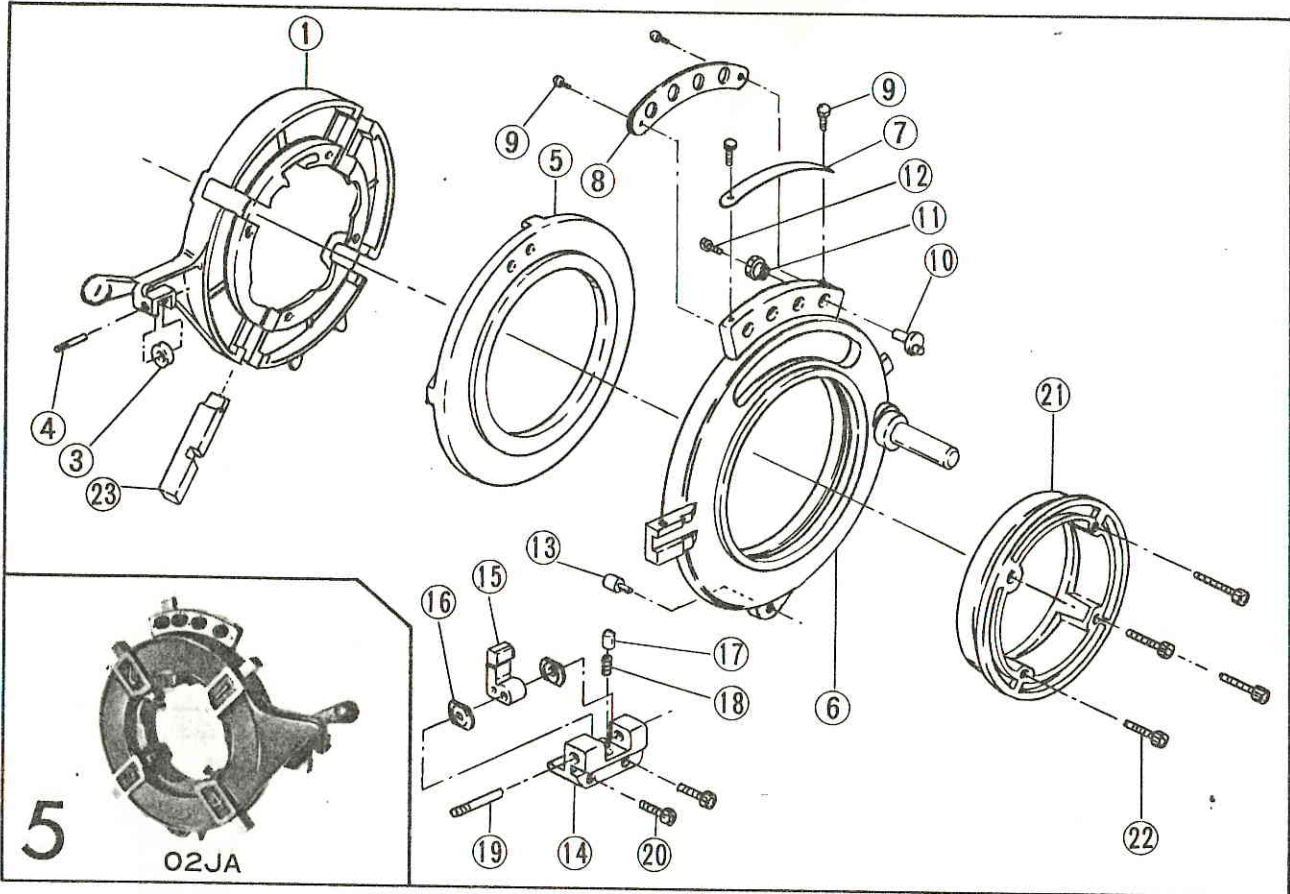
No.	Part No.	Part Name	Set	
1	J 1 8 0	A shaft	1	
2	A 1 9 2	Bearing (#6205LL)	1	
3	J 3 1 0	Oil seal (TCV254511)	1	
4	4 0 6 3	Mission plley	1	For condenser motor (0.75kw 110/220V)
	4 0 6 3	Mission plley	1	For condenser motor (1.0kw 110/220V)
	J 1 9 1	Mission plley	1	For three phase induction motor (1.5kw 380V)
5		Hex-socket set screw (M8 × 12)	1	HF 7/6
6		Snap ring (out side φ18)	1	
7		Key (5 × 5 × 20)	1	
8	H 2 7 2	Bearing H (#6202LL)	1	HK 6202 22
9	J 1 8 1	B shaft	1	
10	A 1 9 1	Bearing (#6004LL)	2	HK 6004 22
11		Wave washer (BWW6203)	1	
12		Key (8 × 7 × 22)	1	
13		Key (8 × 7 × 12)	1	
14	J 1 8 2	B shaft gear A	1	
15	J 1 8 3	B shaft gear B	1	
16	J 1 8 4	B shaft gear C	1	
17	J 1 9 2	B shaft collar	1	
18	J 1 8 5	C shaft	1	
19	J 3 0 2	Bearing (#6007LLU)	1	HK 6007 22
20		Snap ring (out side φ35)	1	
21	J 1 8 6	C shaft gear A	1	
22	J 1 8 7	C shaft gear B	1	
23	J 1 8 8	C shaft gear C	1	
24	J 1 9 4	C shaft collar (Smool)	1	
25		Snap ring (out side φ30)	1	
26	J 1 9 3	C shaft collar (Large)	2	
27	J 3 0 1	Bearing (#6204ZNR)	1	HK 6204 22
28		Snap ring (out side φ20)	1	
29	J 2 0 1	Speed change cap	1	
30		Socket button head cap screw (M6 × 15)	2	DR
31	J 2 1 4	Speed change position plate	1	
32		Rivet (#0 × 5)	4	HK
33	J 2 0 2	Speed change lever	1	
34	J 2 0 3	Notch pin	1	
35	J 2 1 6	Spring	1	
36	J 2 0 4	Speed change shaft	1	
37		Roll pin (φ6 × 30)	2	HF 1570 630
38	J 2 1 5	Stud bolt	2	
39		Socket head cap screw (M6 × 16)	3	HF 696 616
40	J 2 0 0	Speed change cover	1	
41	J 2 0 6	Speed change guide	1	J220 Set
42	J 2 0 7	Guide pin	1	
43		Snap ring (out side φ10)	2	
44	J 2 0 9	Gear shift fork A	1	
45	J 2 1 0	Gear shift fork B	1	
46	J 2 1 1	Shift pin A	1	J221 Set
47	J 2 1 2	Shift pin B	2	
48	J 2 0 5	Fork lever	1	
49	J 2 0 8	Fork lever pin	1	
50				
51				
52				
53				
54				
55				
56				
57				
58				
59				
60				
61				
62				
63				
64				
65				
66				
67				
68				
69				
70				

**REX N100A** (Self-opening die head 1/2~2")



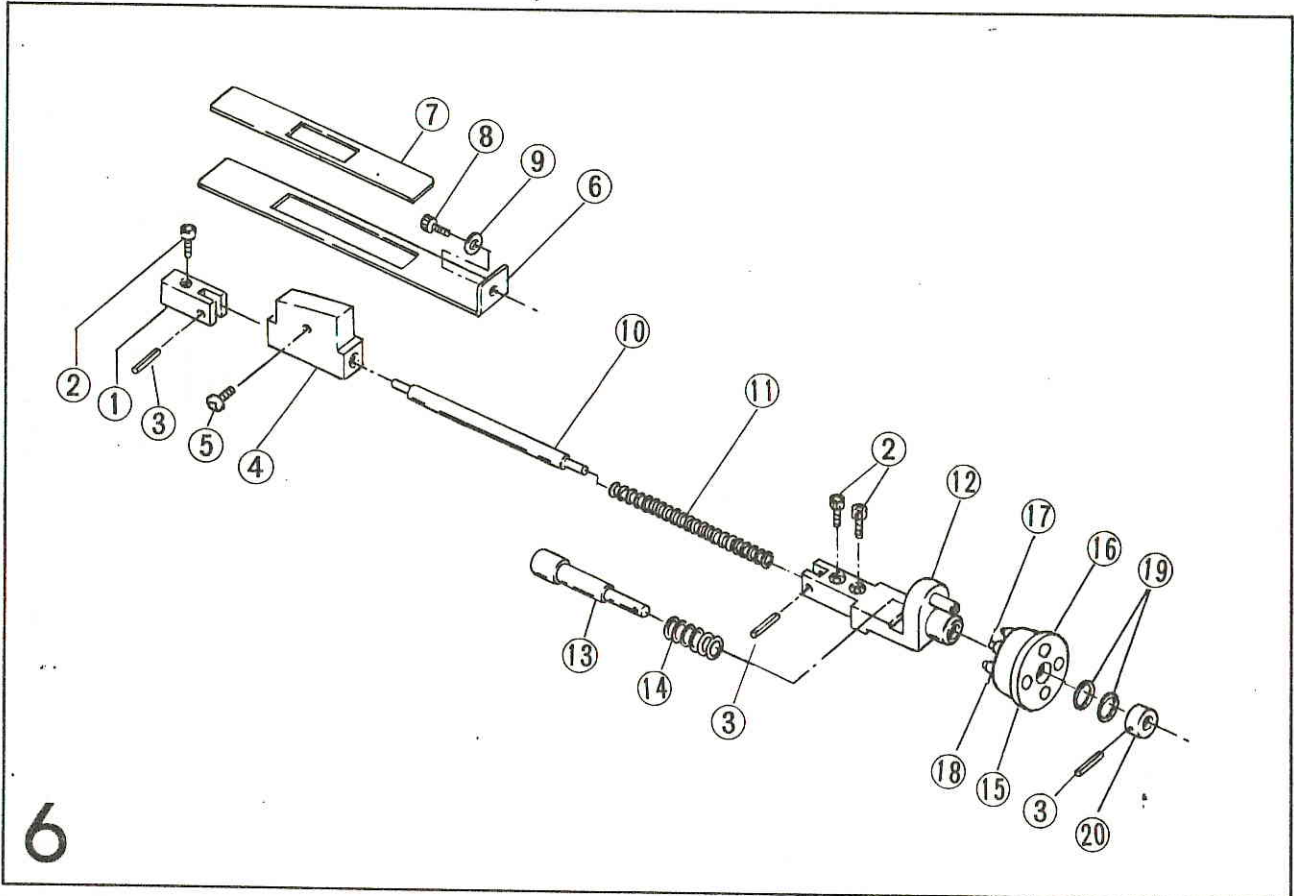
No.	Part No.	Part Name	Set		
1	J 0 3 5	Head stock	1		
2	J 0 3 6	Main shaft gear	1	} 02JJ Set	
3	J 0 3 8	Main shaft	1		
4	J 0 3 7	Hand wheel	1		
5		Straight pin (φ8 × 18)	1		HF 1570 818
6	A 0 0 5	Front main shaft bearing	1		
7	J 0 3 9	Rear main shaft bearing	1		
8		Roll pin (φ4 × 10)	4	HF 1570 410	
9	A 0 0 8	Thrust ring	1		
10		Rear scroll	1	} A006 Rear chuck complete set	
11		Rear chuck cover	1		
12		Rear chuck receptacle	1		
13		Rear chuck jaw	3		
14		Socket head cap screw (M6 × 16)	6		HF 690 616
15		Spring washer (φ6)	6		HF 1265 6
16		Nut (M6)	6		HF 9832 6
17		Roll pin (φ6 × 14)	3		HF 1570 614
18		Chuck body	1		} J051 Chuck complete set (RT-RT)
19		Scroll	1		
20		Chuck jaw	3		
21		Chuck jaw insert	3	} Chuck jaw insert set	
22		Spring retainer	3		
23		Spring	3		
24		Set screw	6		
25		Socket head cap screw (M7 × 57.5)	6	HF 690 760	
26	J 0 4 0	Gear case cover	1		
27		Socket head cap screw (M5 × 18)	6	HF 690 518	
28		Hex-socket pipe plug (PT 1/8)	1	OK	
29		Hex-socket pipe plug (PT 3/8)	1	OK	
30	J 3 2 0	Oil gauge (N-1)	1		
31	J 0 4 2	Window cap	1		
32		Round head machine screw (M5 × 10)	3	HF 9041 510	
33	4 0 4 0	Hose guide	1		
34	4 0 8 6	Hose band	1		
35		Spring washer (φ6)	1	HF 1265 6	
36		Round head machine screw (M6 × 10)	1	HF 9041 610	
37	N 0 0 8	Switch (Condenser motor)	1		
	J 0 3 2	Switch (Three phase induction motor)	1		
38	N 0 0 9	Switch packing (Condenser motor)	1		
	A 1 9 8	Switch packing (Three phase induction motor)	1		
39		Oval head machine screw (M4 × 10)	2	HF 9042 410	
40		Earth	1		
41					
42					
43					
44					
45	J 0 3 3	Capture cord (with power plug)	1		
46	7 0 2 1	Cord bush	1		
47	7 0 9 8	Binder C-15	1		
48					
49	J 0 4 5	Name plate (Single phase)	1		
	J 0 4 6	Name plate (Three phase)	1		
50		Rivet (#4 × 5)	2	OK	
51	4 0 2 5	Gear pump	1		
52		Vinyl tube (φ100)	1		
53		Oil intake line suction tube (B) (φ700)	1		
54		Oil feed line tube (φ530)	1		
55	J 0 4 7	Gear pump gasket	1		
56		Socket head cap screw (M6 × 20)	1	HF 690 630	
57		Socket head cap screw (M6 × 35)	1	635	
58		Spring washer (φ6)	2	HF 1265 6	
59	J 0 4 1	Rear cover	1		
60		Washer (φ5)	4	HF	
61		Round head machine screw (M5 × 10)	4	HF 9042 510	
62		Grease nipple (M6)	2		
63		Hex-socket set screw (cone M8 × 25)	3	HF	
64		Hex-socket set screw (half dog M8 × 25)	1	HF	
65					
66					
67					
68					
69					

# REX N100A (Profiling die head 2½~4")



No.	Part No.	Part Name	Set	
1	J 0 6 5	Die head body (2½~4)	1	
2				
3	T 0 0 8	Die head roller	1	
4	3 4 1 2	Die head roller pin	1	
5	J 0 6 7	Cam plate (2½~4)	1	
6	J 0 6 6	Die head receiver plate (2½~4)	1	Set J076 Die head post
7	J 0 7 8	Die head size plate (2½~4)	1	
8	J 0 7 9	Adjustment plate (2½~4)	1	
9		Rivet (#4 × 5)	4	
10	7 6 9 2	Crank pin	4	
11	7 6 9 3	Size adjustment knob	4	
12		Socket head cap screw (M6 × 10)	4	
13	J 0 7 7	Die head position pin	1	
14	J 0 7 3	Size setting lever holder (2½~4)	1	
15	7 6 9 0	Size setting lever	1	
16	7 7 4 3	Size adjustment plate	2	
17	7 7 9 0	Notch pin	1	
18		Spring (φ5 × 12)	1	
19	7 7 4 2	Retaining pin	1	
20		Socket head cap screw (M8 × 20)	2	HF 690 820
21	J 0 6 8	Retaining ring (2½~4)	1	Set G865 Dies knoch
22		Socket head cap screw (M6 × 40)	4	HF 690 640
23	X 0 5 1	Dies (2½~4)	1 set	
24				
25				
26	0 2 J A	Complete die head		
27				
28				
29				
30				
31				
32				
33				
34				
35				
36				
37				
38				
39				
40				

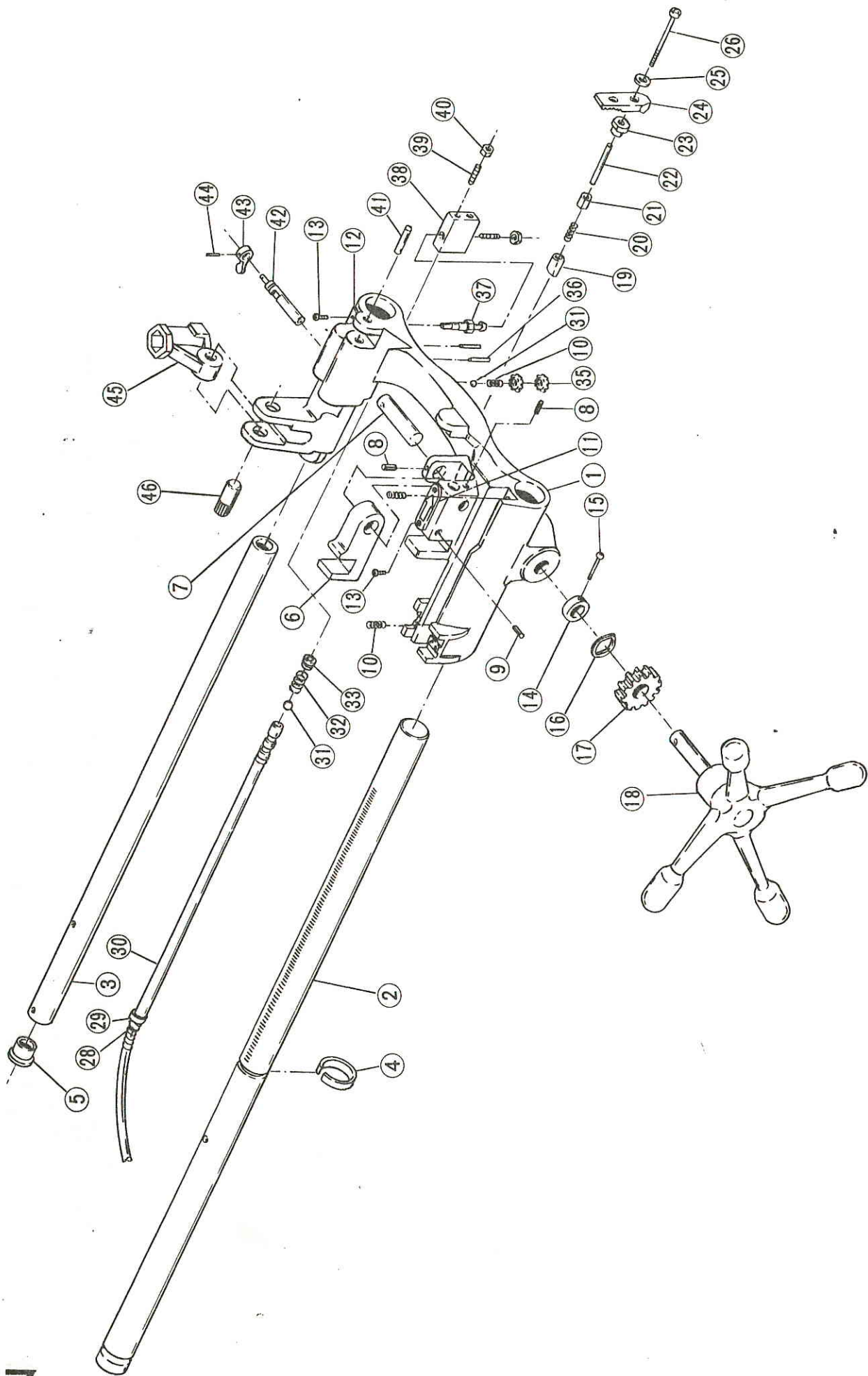
# REX N100A (Carriage (Profiling))



No.	Part No.	Part Name	Set	
1	J 1 1 6	Spring support shaft holder A	1	
2		Socket head cap screw (M6 × 20)	3	
3		Roll pin (φ4 × 20)	3	HF 1570 420
4	J 1 1 5	Profiling board	1	
5		Round head machine screw (M5 × 6)	1	HF 904156
6	J 1 2 1	Profiling cover A	1	
7	J 1 2 2	Profiling cover B	1	
8		Socket head cap screw (M8 × 10)	1	HF 690 810
9		Washer (φ8)	1	D4
10	J 1 2 3	Spring support shaft	1	
11	J 1 4 9	Spring	1	
12	J 1 1 7	Spring support shaft holder B	1	Set J120 Size stopper pin
13	J 1 1 9	Size adjustment shaft	1	
14	J 1 5 0	Spring	1	
15	J 1 2 4	Size plate	1	
16	J 1 3 5	Size plate cover	1	
17	J 2 3 5	Socket head cap screw (4")	1	
	J 2 3 6	Socket head cap screw (3 1/2")	1	
	J 2 3 7	Socket head cap screw (3")	1	
	J 2 3 8	Socket head cap screw (2 1/2")	1	
18	J 1 5 1	Spring	1	
19		Wave washer (φ12)	2	
20	J 1 2 6	Stop collar	1	
21				
22				
23				
24				
25				
26				
27				
28				
29				
30				
31				
32				
33				
34				
35				
36				
37				

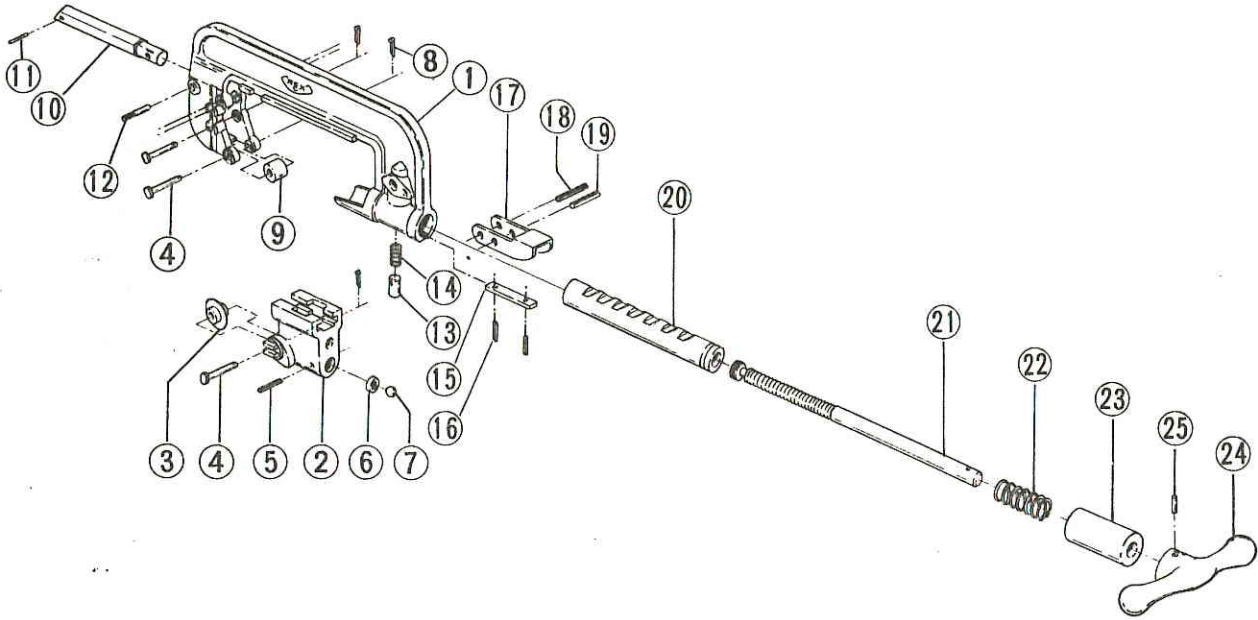


# REX N100A (Carriage)



No.	Part No.	Part Name	Set	
1	N 7 0 1	Die head body	1	Set 7713 Die head post
2	N 7 0 4	Opening block	1	
3	7 6 9 7	Spring	1	
4	N 7 1 4	Lever pin	1	
5	N 7 2 0	Spring	1	
6	N 7 1 8	Spring	1	
7		Spring guide (φ4 × 18)	1	
8		Roll pin (φ6 × 16)	1	HF1576616
9	N 7 0 9	Auto-open pin	1	
10	N 7 1 6	Straight pin	1	
11	N 7 1 1	Open lever	1	
12		Socket head cap screw (M8 × 15)	1	HF690815
13	N 7 1 2	Auto-open link	1	
14		Socket head cap screw (M8 × 10)	1	HF690810
15		Washer (φ8)	1	
16	N 7 1 3	Auto-open lever C	1	
17	N 7 1 7	Stop screw	2	
18	N 7 0 2	Cam plate	1	
19	N 7 2 1	Size plate	1	
20		Truss screw (M4 × 5)	2	DK
21	N 7 0 3	Retaining ring	1	Set G865 Dies knoch
22		Socket head cap screw (M6 × 16)	4	
23	N 7 0 6	Cam plate fixed pin	1	
24	N 7 2 2	Spring	1	
25	N 7 0 8	Eccentric washer	1	
26	N 7 0 5	Lever nut	1	
27	N 7 0 7	Nut	1	
28		Snapring (out side φ20)	1	
29		Roll pin (φ5 × 14)	1	HF1576514
30	X 0 4 1	Dies (1/2~3/4)	1 set	
	X 0 8 1	Dies (1~2)	1 set	
31				
32				
33	0 2 N 1	Complete die head		
34				
35				
36				
37				
38				
39				
40				
41				
42				
43				
44				
45				
46				
47				
48				
49				
50				
51				
52				
53				
54				
55				
56				
57				
58				
59				
60				
61				
62				
63				
64				
65				
66				
67				
68				
69				
70				
71				

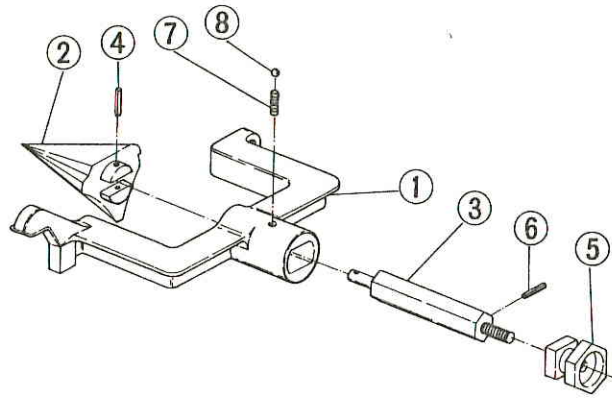
# REX N100A (Cutter)



8

No.	Part No.	Part Name	Set	
1	J 1 6 0	Cutter frame	1	
2	J 1 6 1	Cutter guide	1	
3	5 0 7 6	Cutter wheel	1	
4	5 0 7 9	Cutter pin (Long)	5	
5		Roll pin (φ5 × 30)	1	HF 1570 530
6	J 1 6 4	Thrust roller	1	
7		Steel ball (φ10)	1	HK 10
8		Spring cotter (#2.3 × 15)	5	
9	5 0 7 4	Cutter roller	4	
10	J 1 6 5	Cutter arm shaft	1	
11		Roll pin (φ5 × 35)	1	HF 1570 535
12	J 1 6 7	Cutter arm shaft pin	1	
13	J 1 7 0	Adjustment pin	1	
14	J 1 7 4	Spring	1	
15	J 1 7 2	Key	1	
16		Roll pin (φ5 × 12)	2	HF 1570 512
17	J 1 7 1	Open lever	1	
18		Roll pin (φ6 × 45)	1	HF 1570 645
19		Roll pin (φ8 × 45)	1	HF 1570 845
20	J 1 6 8	Feed holder	1	
21	J 1 6 3	Feed screw	1	
22	J 1 7 3	Spring	1	
23	J 1 6 9	Stop cap	1	
24	E 2 0 5	Cutter handle	1	
25		Roll pin (φ6 × 35)	1	HF 1570 635
26				
27				
28				
29				
30				
31				
32				
33				
34				
35				
36				
37				
38				
39				
40				

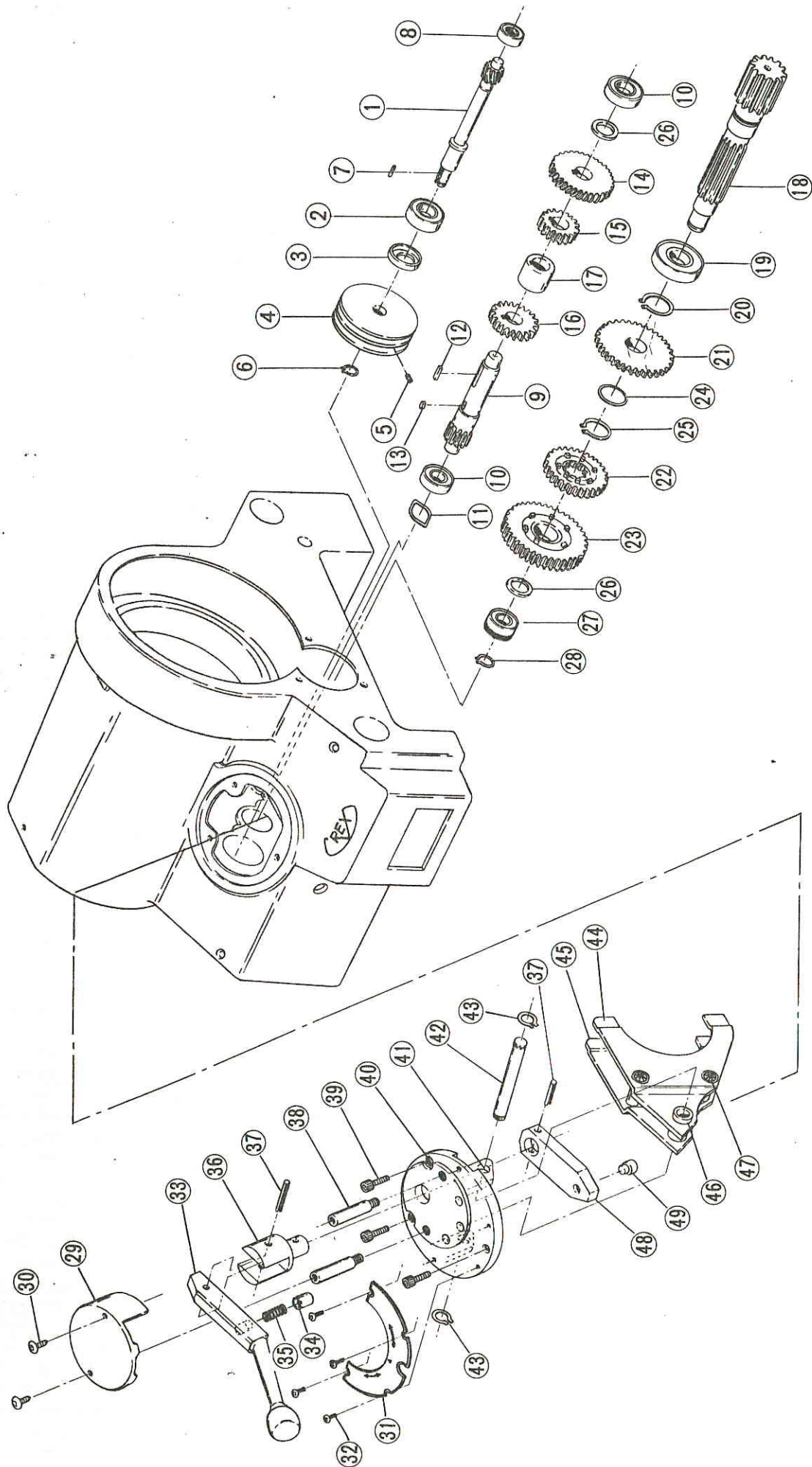
# REX N100A (Reamer)



9

No.	Part No.	Part Name	Set	
1	A 5 2 1	Reamer arm	1	
2	A 5 2 2	Reamer cone	1	
3	A 2 5 3	Reamer shaft	1	
4		Roll pin	1	(φ8 × 50)
5	1 0 9 4	Reamer knob	1	HF 1570 850
6		Roll pin	1	(φ4 × 10)
7	5 0 9 6	Spring	1	HF 1570 410
8		Steel ball	1	(φ8) HK 8
9				
10				
11				
12				
13				
14				
15				
16				
17				
18				
19				
20				
21				
22				
23				
24				
25				
26				
27				
28				
29				
30				
31				
32				
33				
34				
35				
36				
37				
38				
39				
40				

# REX N100A (Gear case)



No.	Part No.	Part Name	Set	
1	J 1 1 0	Carriage	1	
2	J 1 1 1	Carriage support bar A	1	
3	J 1 1 2	Carriage support bar B	1	
4	7 9 1 1	Carriage support collar	1	
5	J 1 4 8	Carriage support bar B cap	1	
6	J 1 1 3	Die head holder	1	
7	J 1 1 4	Die head holder shaft	1	
8		Roll pin (φ5 × 12)	1	HF 1570 512
9		Roll pin (φ6 × 8)	1	HF 1570 68
10	5 0 9 6	Spring (φ8 × 10)	3	
11	J 1 4 5	Open plate	1	
12	J 1 5 5	Oil flow selector plate	1	
13		Rivet (#4 × 5)	4	DK
14	9 0 1 8	Feed gear stop ring	1	
15		Round head machine screw (M5 × 30)	1	HF 9041 530
16		Wave washer (φ20)	1	
17	A 5 1 5	Carriage feed gear	1	
18	A 5 1 7	Carriage handle (with feed gear shaft)	1	
19	A 1 0 9	Die head stop pin	1	
20	A 1 1 5	Spring	1	
21	J 1 4 7	Knob pin bush S	1	
22	J 1 3 9	Knob pin bush	1	
23	A 1 1 0	Die head stop pin cover	1	
24	J 1 3 6	Die head lock knob	1	
25	J 1 3 7	Hemi-spherical washer	1	
26		Socket head cap screw (M5 × 60)	1	HF 690 560
27				
28		Copper wire (φ0.8 × ℓ200)	1	
29	1 0 3 5	Oil joint	1	
30	J 1 4 0	Oil pipe (Large)	1	
31		Steel ball (φ8)	1	
32		Spring	1	
33		Hex-socket set screw (M10 × 10)	1	HF 710 1010
34				
35		Push nut	2	
36		Roll pin (φ5 × 45)	2	HF 1520 545
37	J 1 4 2	Oil pipe (Smool)	1	
38	J 1 4 1	Oil pipe connector	1	
39		Hex-socket set screw (cone M6 × 25)	2	HF 1570 625 HF 710 625
40		Jam nut (M6)	2	
41	1 0 9 6	Reamer arm stop pin	1	
42	J 1 4 3	Oil flow selector shaft	1	Set O-ring (φ12)
43	J 1 4 4	Oil flow selector lever	1	
44		Roll pin (φ3 × 18)	1	HF 1590 318
45	J 1 6 2	Cutter arm	1	
46	J 1 6 6	Cutter arm stop pin	1	
47				
48				
49				
50				
51				
52				
53				
54				
55				
56				
57				
58				
59				
60				
61				
62				
63				
64				
65				
66				
67				
68				
69				
70				
71				
72				