

REX N40A

Parts List

Ref. No. 198509



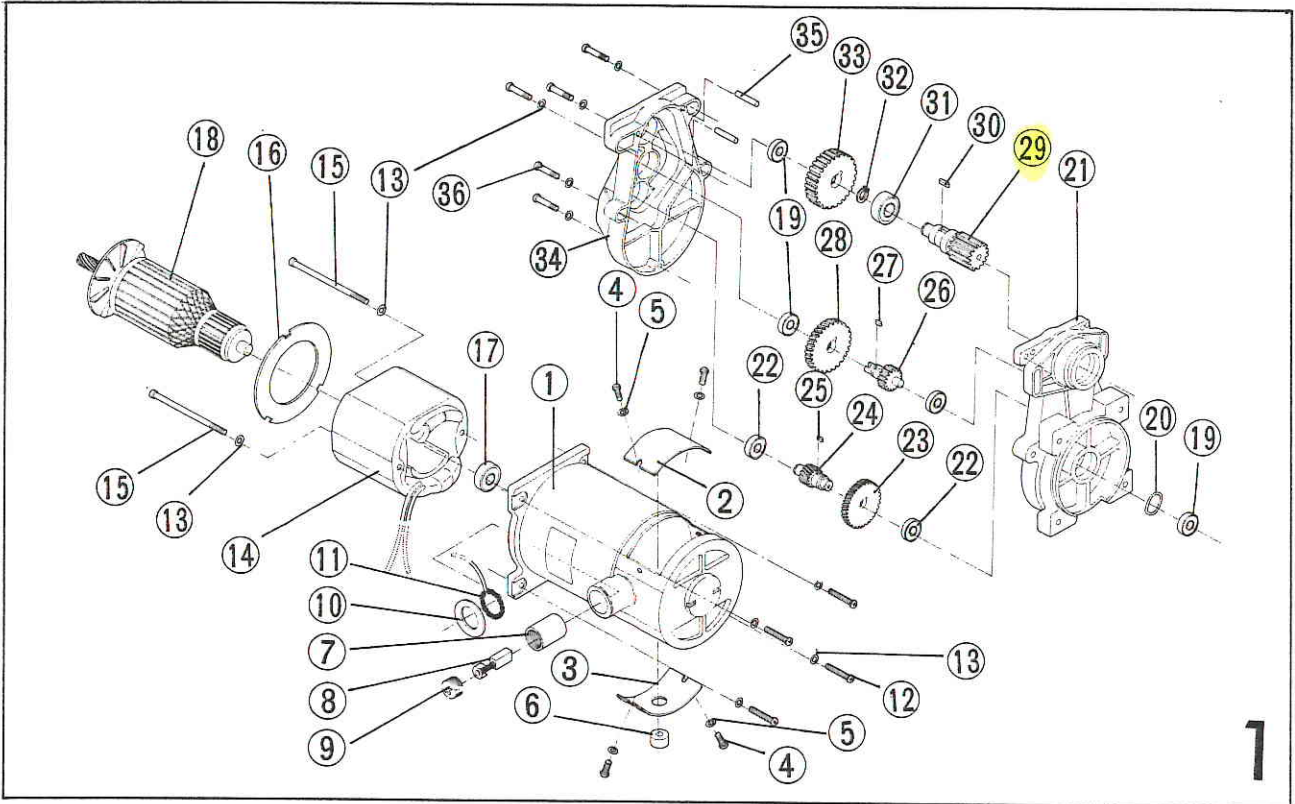
HAJO TOOL A/S

Vejlegårdsvej 65 B · DK-2665 Vallensbæk Strand
Tel +45 4444 2400 · Fax +45 4444 0833
www.hajo.dk · E-mail: hajo@hajo.dk



REX Industries Co., Ltd.

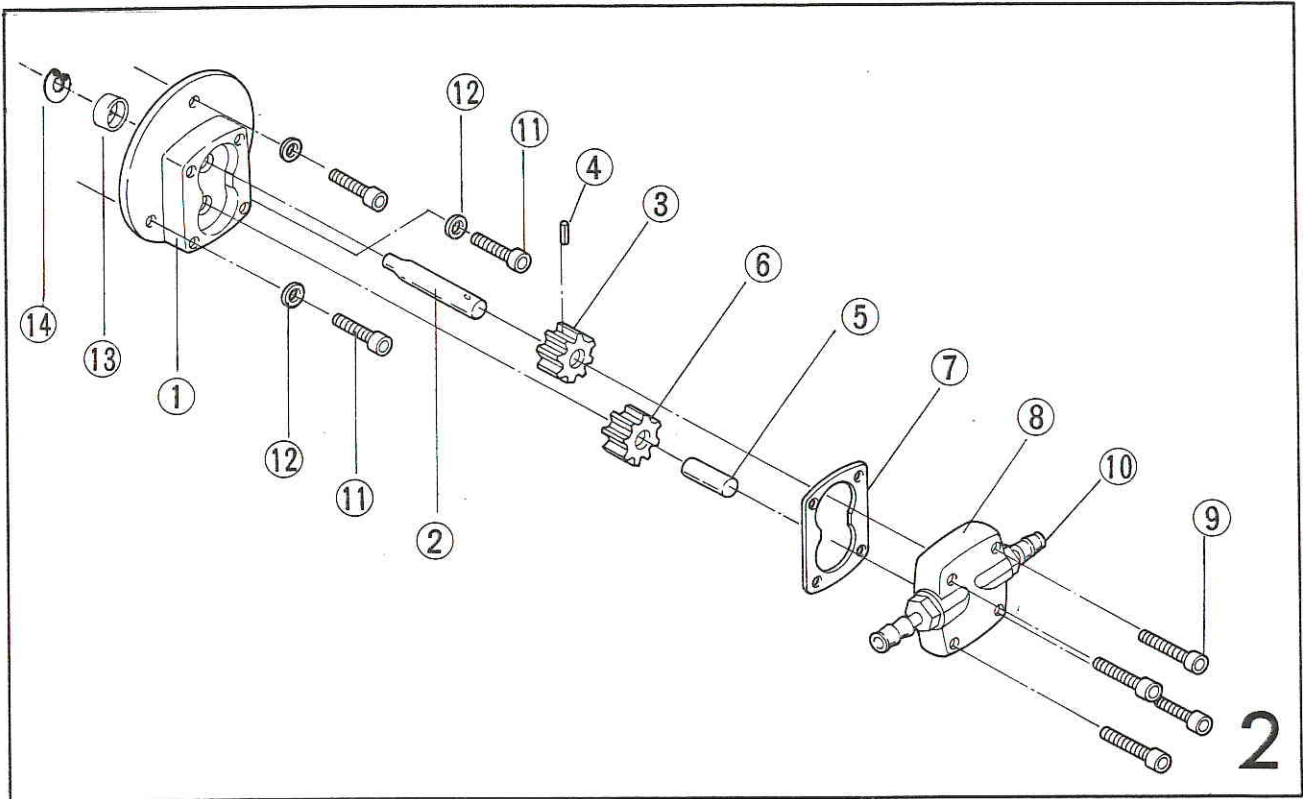
REX N40A (Motor)



1

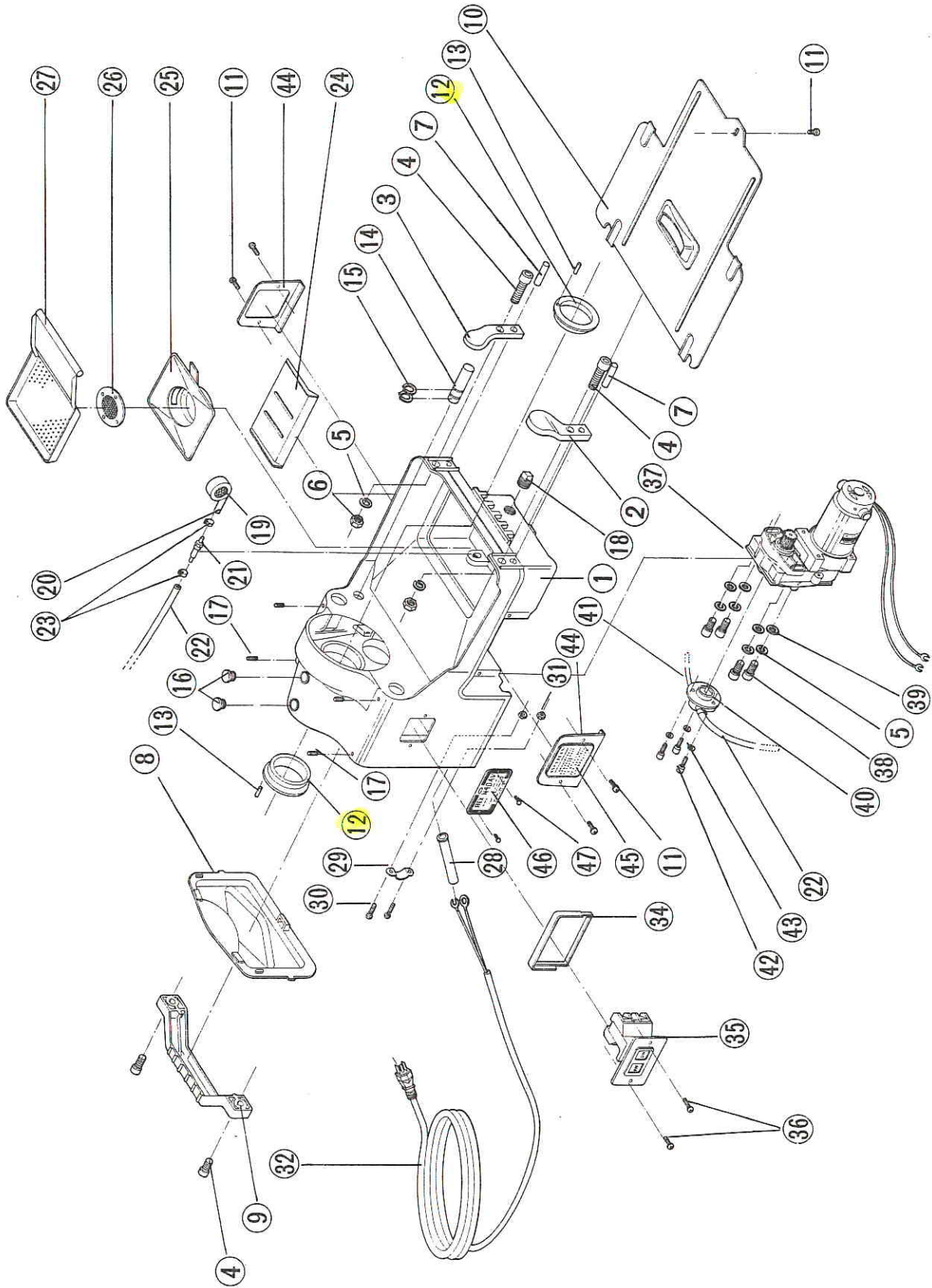
No.	Part No.	Part Name	Set
1		Housing	1
2		Cover(1)	1
3		Cover(2)	1
4		Round head machine screw (M4×8)	4
5		Washer (φ4)	4
6		Rubber bush	1
7		Carbon brush holder	2
8		Carbon brush(auto-stop)	1set
9		Carbon brush cap	2
10		Stop plate	2
11		Internal wize assembly	2
12		Round head machine screw (M5×20)	4
13		Spring washer (φ5)	11
14		Stator assembly	1
15		Round head machine screw (M5×80)	2
16		Air vent	1
17		Bearing (628ZZ)	1
18		Armature assembly	1
19		Bearing (6201ZZ)	3
20		Wave washer	1
21		Gear cover	1
22		Bearing (6200ZZ)	3
23		First gear	1
24		Second pinyon	1
25		Key (4×4×11)	1
26		Third pinyon	1
27		Key (5×5×12)	1
28		Second gear	1
29		Spindle	1
30		Key (5×5×16)	1
31		Bearing (6204ZZ)	1
32		Snap ring (out side φ20)	1
33		Final gear	1
34		Inner cover	1
35		Spring pin	2
36		Round head machine screw (M5×25)	5
37			
38			
39			
40			

REX N40A (Pump)



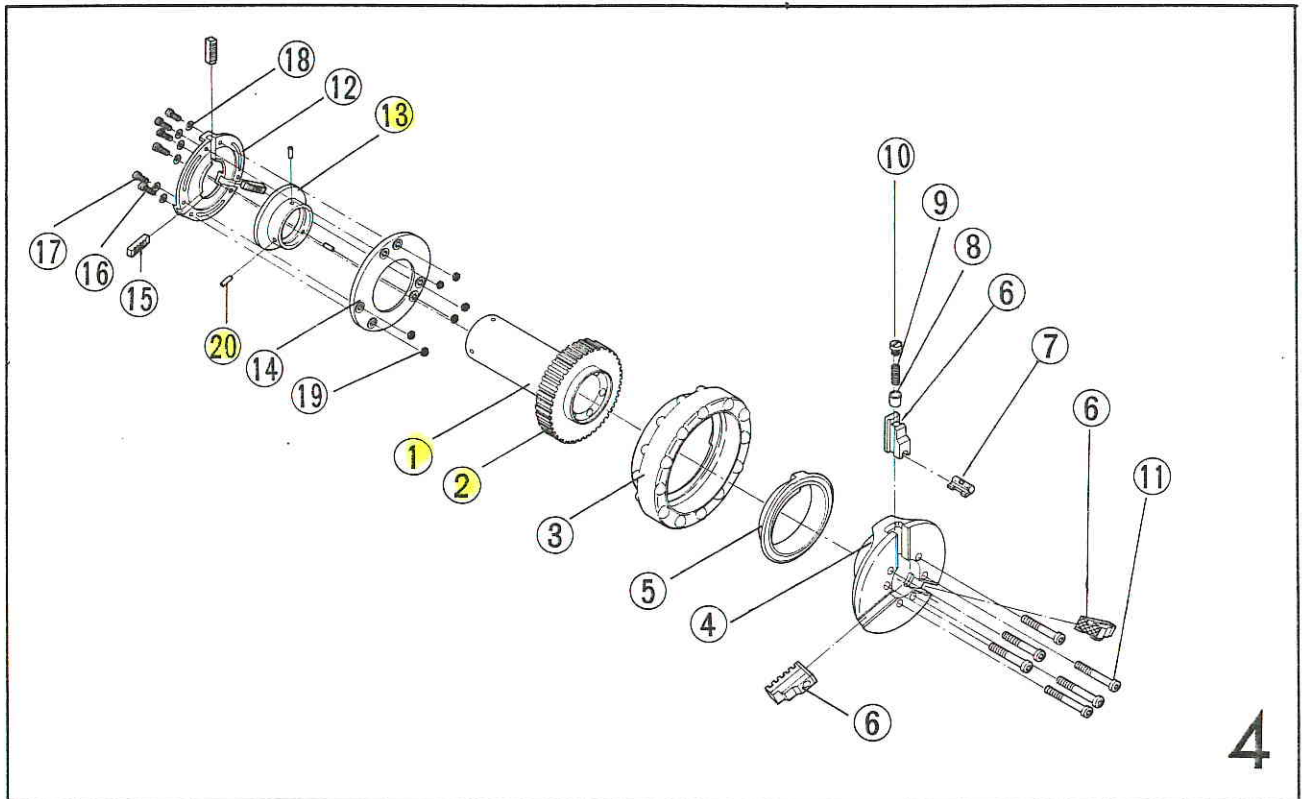
No.	Part No.	Part Name	Set
1		Pump body	1
2		Shaft	1
3		Pump gear A	1
4		Roll pin (φ2.5×6)	1
5		Pin	1
6		Pump gear B	1
7		Gasket	1
8		Rear cover	1
9		Socket head cap screw (M5×22)	4
10		Joint	2
11		Socket head cap screw (M6×16)	3
12		Spring washer (φ6)	3
13		Oil seal (AC0158A)	1
14		Snap ring (in side φ22)	1
15			
16			
17			
18			
19			
20			
21			
22			
23			
24			
25			
26			
27			
28			
29			
30			
31			
32			
33			
34			
35			
36			
37			
38			
39			
40			

REX N40A (Base)



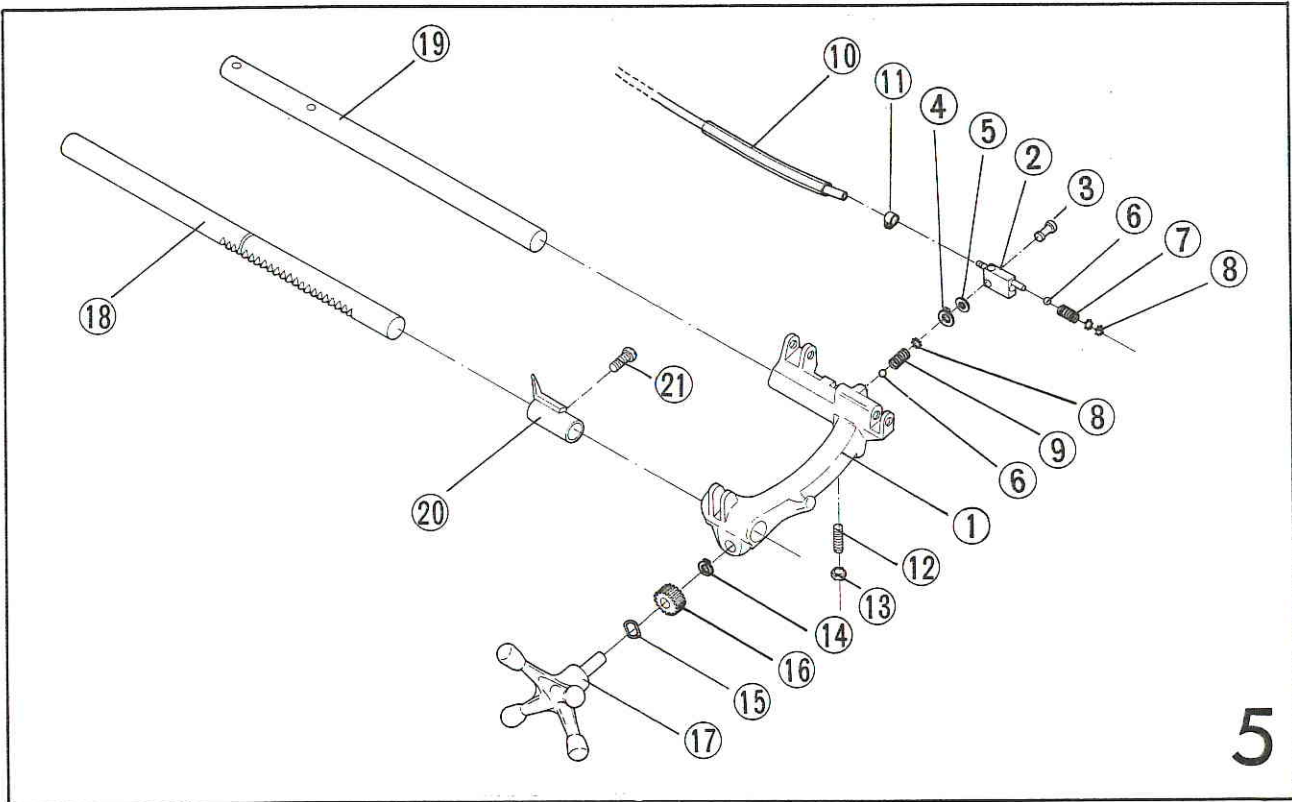
No.	Part No.	Part Name	Set	
1	G 0 0 1	Base casting assembly	1	Set/ G004 Gear cover
2	G 0 1 3	Support (Left)	1	
3	G 0 1 6	Support (Right)	1	
4		Socket head cap screw (M8×25)	4	
5		Spring washer (φ8)	6	
6		Nut (M8)	2	
7		Roll pin (φ6×20)	2	
8	G 0 3 5	Rear cover	1	
9	G 0 3 8	Rear grip	1	
10	G 0 3 4	Bottom cover	1	
11		Round head machine screw (M5×10)	5	
12	G 0 0 5	Main shaft bearing	2	
13		Pin (φ4×10)	2	
14	G 0 4 5	Oil tube cover	1	
15		Snap ring (out side φ16)	2	
16	N 0 3 9	Oil cap	2	
17		Hex-socket set screw (cone M8×14)	4	
18		Drain plug (PT½)	1	
19	N 0 4 8	Strainer	1	Set/ Tapping screw (M5×8)
20	G 0 4 9	Oil intake line suction tube A (60ℓ)	1	
21	T 0 5 6	Nipple	1	
22	G 0 4 7	Oil intake line suction tube B (350ℓ)	1	
23		Pipe band (10mm)	4	
24	G 0 5 5	Oil pan	1	
25	G 0 3 0	Tank upper cover	1	
26	N 0 2 9	Oil filter	1	
27	G 0 3 1	Scrap receiver	1	
28	7 0 2 1	Cord bush	1	
29	7 0 9 8	Binder C-15	1	
30		Round head machine screw (M4×20)	2	
31		Nut (M4)	2	
32	N 1 2 2	Capyre cord (3.5M)	1	
33				
34	N 0 4 1	Swich fixed plate	1	
35	N 0 0 8	Swich(normal)	1	
	2 7 5 1	Swich(reversing)	1	
36		Oval head machine screw (M4×12)	2	
37	G 0 7 2	Motor	1	
38		Socket head cap screw (M8×35)	4	
39		Washer	4	
40	9 0 1 0	Gear pump(normal)	1	
	9 0 4 0	Gear pump(reversing)	1	
41	G 0 4 6	Oil feed line tube (620ℓ)	1	
42		Socket head cap screw (M6×16)	3	
43		Spring washer (φ6)	3	
44	G 0 3 6	Side cover	2	
45	N 1 2 6	Side cover level	1	
46	G 0 5 8	Name plate	1	
47		Rivet (=4×5)	2	
48				
49				
50				
51				
52				
53				
54				
55				
56				
57				
58				
59				
60				
61				
62				
63				
64				
65				

REX N40A (Main shaft)



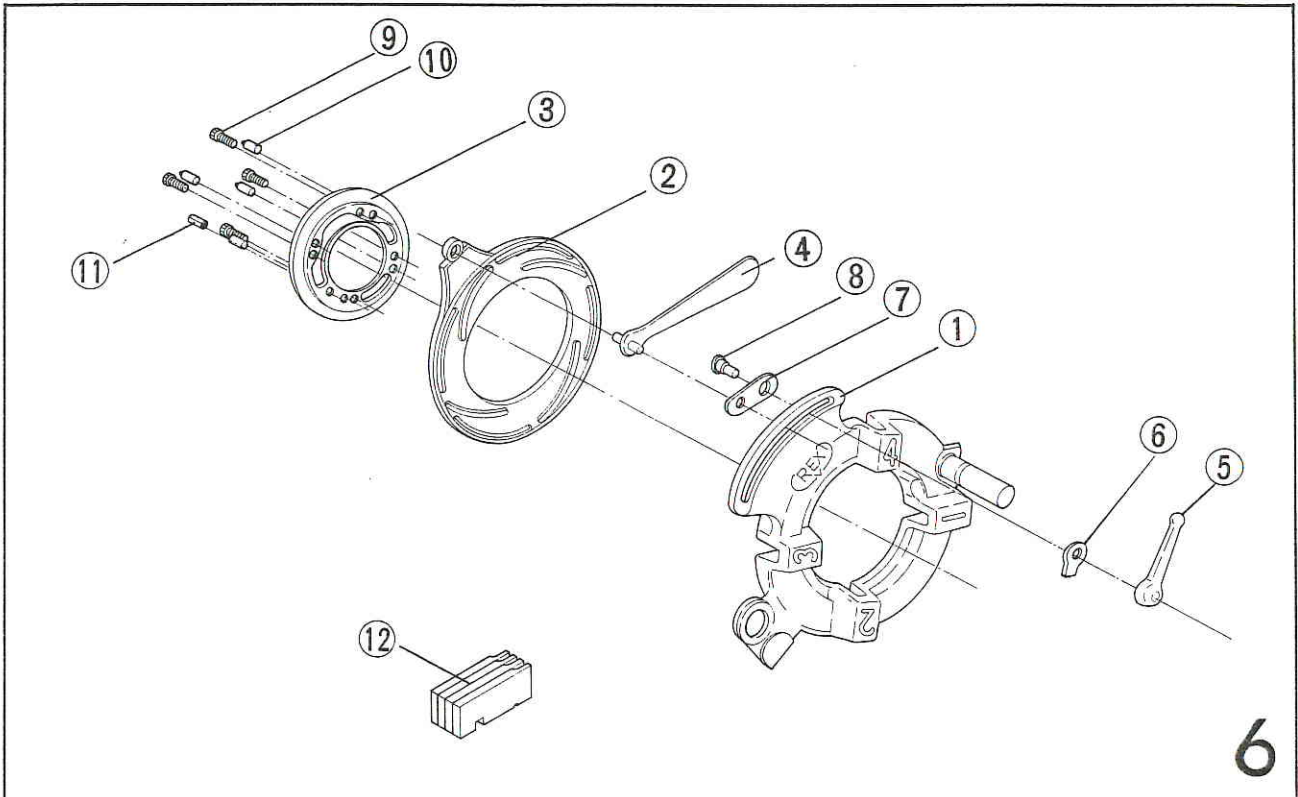
No.	Part No.	Part Name	Set	
1	G 0 0 2	Main shaft	1	} 02GS Set
2	G 0 0 3	Main shaft gear	1	
3	G 0 0 7	Hand wheel	1	
4	G 0 6 4	Chuck body	1	} Chuck complete set
5		Chuck scroll	1	
6		Chuck jaw	3	
7	HN105	Chuck jaw insert	3	
8		Spring retainer	3	
9		Spring	3	
10		Set screw	3	
11		Socket head cap screw (M6×45)	6	} Set
12		Rear chuck receptacle	1	
13	G 0 0 8	Rear scroll	1	} Rear chuck complete set
14		Rear chuck cover	1	
15		Rear chuck jaw	3	
16		Reamer screw (M4×14)	2	
17		Round head machine screw (M4×14)	4	
18		Spring washer (φ4)	6	
19		Nut (M4)	6	
20		Roll pin (φ6×12)	3	
21				
22				
23				
24				
25				
26				
27				
28				
29				
30				
31				
32				
33				
34				
35				
36				
37				
38				
39				
40				

REX N40A (Carriage)



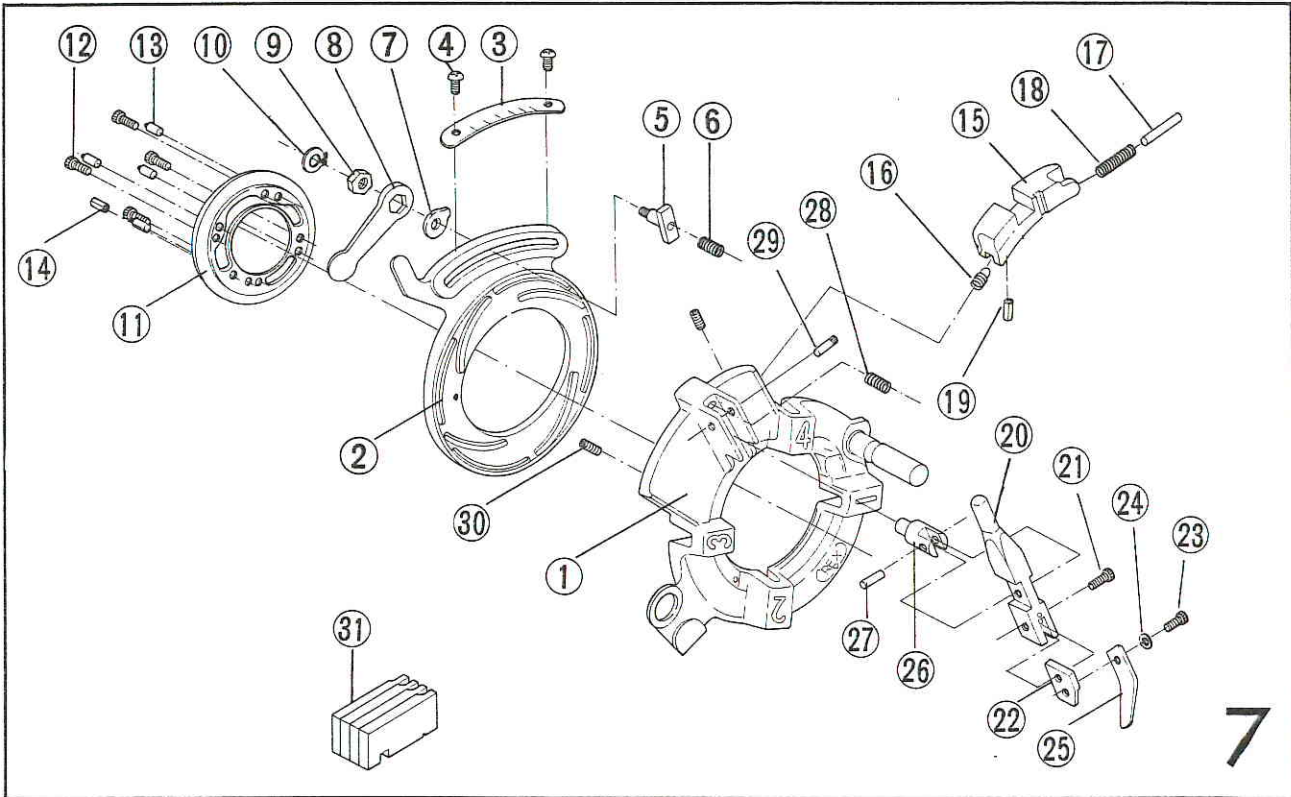
No.	Part No.	Part Name	Set	
1	G 8 0 6	Carriage	1	Set/ N051 Oil cap
2	G 0 4 4	Oil tube connector	1	
3	G 0 3 3	Oil flow selector lever	1	
4		Snap ring (out side $\phi 10$)	1	
5		O-ring (P7)	1	
6		Steel ball ($\phi 8$)	2	
7	T 0 5 0	Spring	1	
8		Push nut (M10)	3	
9	5 0 9 6	Spring ($\phi 8 \times 10$)	1	
10	N 0 5 4	Oil feed line tube cover ($12 \times 200\ell$)	1	
11		Pipe band (12mm)	1	
12		Hex-socket set screw (cone M6 $\times 15$)	1	
13		Nut (M6)	1	
14		Snap ring (out side $\phi 19$)	1	
15		Wave washer ($\phi 20$)	1	
16	A 5 1 5	Carriage feed gear	1	
17	G 0 1 4	Carriage handle	1	Set/ G015 Feed gear shaft
18	G 0 1 1	Carriage support bar A	1	
19	G 0 1 2	Carriage support bar B	1	
20	G 0 1 7	Security collar	1	
21		Round head machine screw (M5 $\times 10$)	1	
22				
23				
24				
25				
26				
27				
28				
29				
30				
31				
32				
33				
34				
35				
36				
37				
38				
39				
40				

REX N40A (Universal die head 1/2~1 1/2")

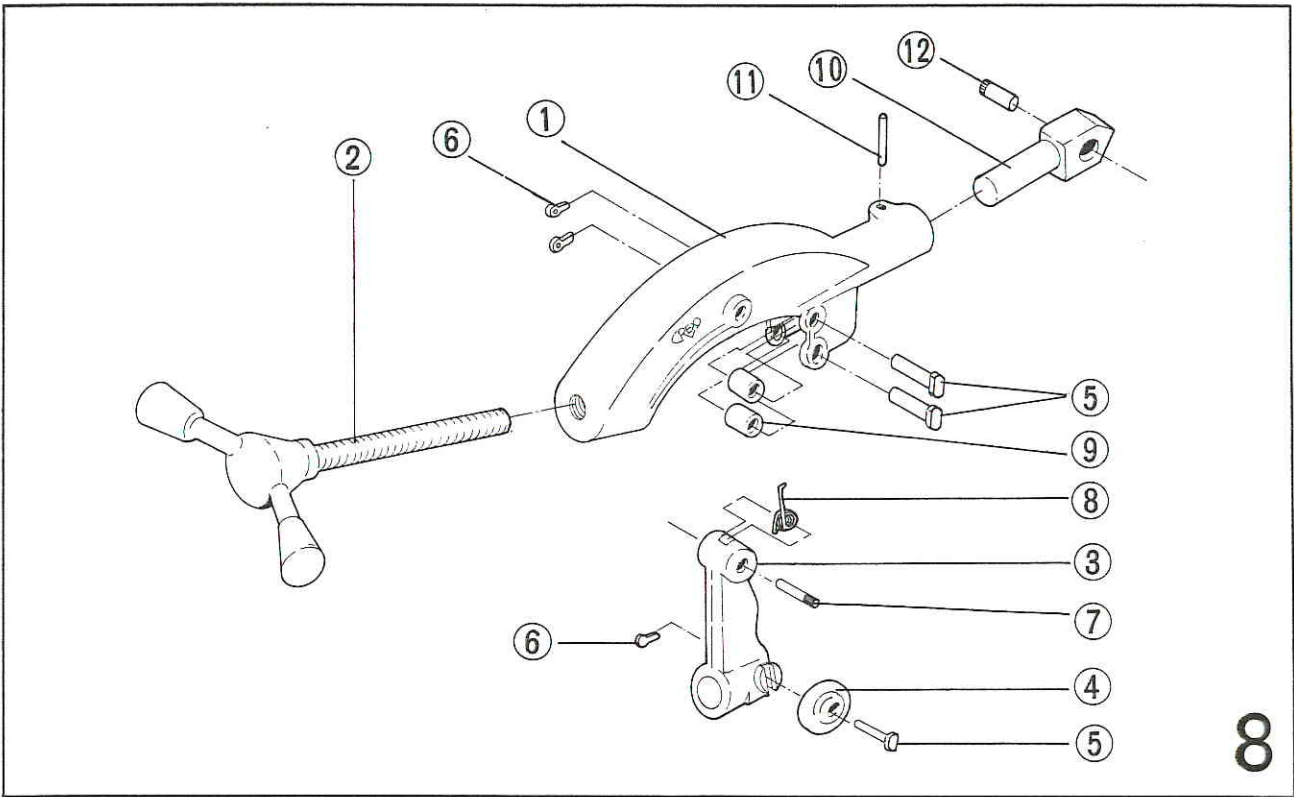


No.	Part No.	Part Name	Set	
1	G 8 0 1	Universal die head body	1	Set/ G821 Die head post
2	G 8 0 4	Cam plate	1	
3	G 8 0 5	Universal retaining ring	1	
4	2 3 6 1	Eccentric handle	1	
5	2 3 7 7	Lever nut	1	
6	2 3 8 1	Eccentric washer	1	
7	2 3 7 1	Eccentric link	1	
8	2 3 8 6	Eccentric screw	1	
9		Socket head cap screw	(M6×16)	4
10	G 8 6 5	Dies knoch		4
11		Roll pin	(φ5×14)	1
12	X 0 4 1	Dies	(1/2~3/4")	1 set
	X 0 4 2	Dies	(1~1 1/2")	1 set
13				
14				
15				
16				
17				
18				
19				
20				
21				
22				
23				
24				
25				
26				
27				
28				
29				
30				
31				
32				
33				
34				
35				
36				
37				
38				
39				

REX N40A (Semi-automatic die head 1/2~1 1/2")



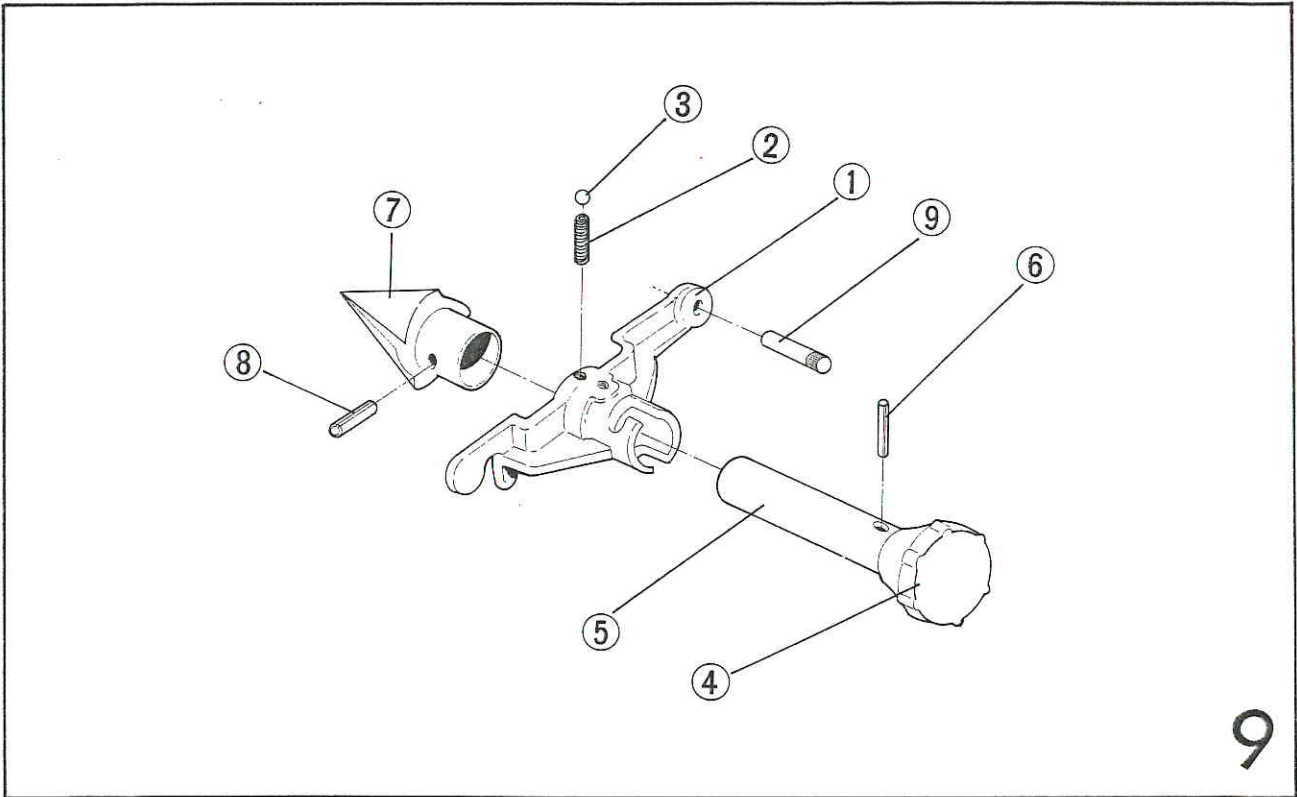
No.	Part No.	Part Name	Set	
1	G 8 0 0	Die head body	1	Set/ G821 Die head post, N710 Auto-open pin bush
2	G 8 0 2	Cam plate	1	
3	G 8 3 0	Size plate	1	
4		Truss screw (M4×6)	2	
5	G 8 1 1	Cam plate fixed pin	1	
6	N 7 2 2	Spring	1	
7	N 7 0 8	Eccentric washer	1	
8	N 7 0 5	Lever nut	1	
9	N 7 0 7	Nut	1	
10		Snap ring (out side φ20)	1	
11	G 8 0 5	Retaining ring	1	
12		Socket head cap screw (M6×16)	4	
13	G 8 6 5	Dies knoch	4	
14		Roll pin (φ5×14)	1	
15	G 8 1 0	Opening block	1	
16	N 7 2 0	Spring	1	
17	7 7 3 5	Spring guide	1	
18	7 6 9 7	Spring	1	
19		Roll pin (φ6×18)	1	
20	N 7 1 1	Open lever	1	
21		Socket head cap screw (M8×16)	1	
22	G 8 1 2	Auto-open link	1	
23		Button head socket cap screw (M8×10)	1	
24		Washer (φ8)	1	
25	G 8 1 3	Auto-open lever	1	
26	N 7 0 9	Auto-open pin	1	
27	N 7 1 6	Straight pin	1	
28	N 7 1 8	Spring	1	
29	N 7 1 4	Lever pin	1	
30		Hex-socket set screw (M8×18)	2	
31	X 0 4 1	Dies (1/2~3/4")	1 set	
	X 0 4 2	Dies (1~1 1/2")	1 set	
32				
33				
34				
35				
36				
37				
38				
39				



8

No.	Part No.	Part Name	Set	
1	G 0 2 0	Cutter frame	1	
2	G 0 2 1	Cutter handle	1	Set/ G022 Feed screw
3	G 0 2 4	Cutter guide	1	
4	5 0 7 6	Cutter wheel	1	
5	G 0 3 9	Cutter pin	3	
6		Spring cotter (#2.3×15)	3	
7	G 0 5 1	Cutter guide pin	1	
8	9 0 2 5	Spring	1	
9	G 0 2 9	Cutter roller	2	
10	G 0 2 3	Cutter arm	1	
11	4 0 7 2	Cutter frame stop pin	1	
12	1 0 7 6	Cutter arm stop pin	1	
13				
14				
15				
16				
17				
18				
19				
20				
21				
22				
23				
24				
25				
26				
27				
28				
29				
30				
31				
32				
33				
34				
35				
36				
37				
38				
39				
40				

REX N40A (Reamer)



9

No.	Part No.	Part Name	Set	
1	G 8 0 7	Reamer holder	1	
2	5 0 9 6	Spring	($\phi 8 \times 10$)	1
3		Steel ball	($\phi 8$)	1
4	G 0 2 7	Knob	1	} Set
5	G 0 2 6	Reamer shaft	1	
6		Roll pin	($\phi 6 \times 35$)	1
7	9 0 4 3	Reamer cone		1
8		Roll pin	($\phi 6 \times 45$)	1
9	G 0 5 6	Reamer holder stop pin		1
10				
11				
12				
13				
14				
15				
16				
17				
18				
19				
20				
21				
22				
23				
24				
25				
26				
27				
28				
29				
30				
31				
32				
33				
34				
35				
36				
37				
38				
39				
40				