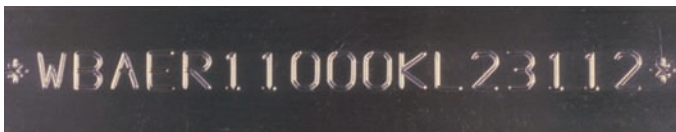


The powerful, extremely heavy-duty SC5000/420 is the right choice when deep, low noise marking is required. It is especially well-suited for VIN (Vehicle Identification Number) Marking applications.



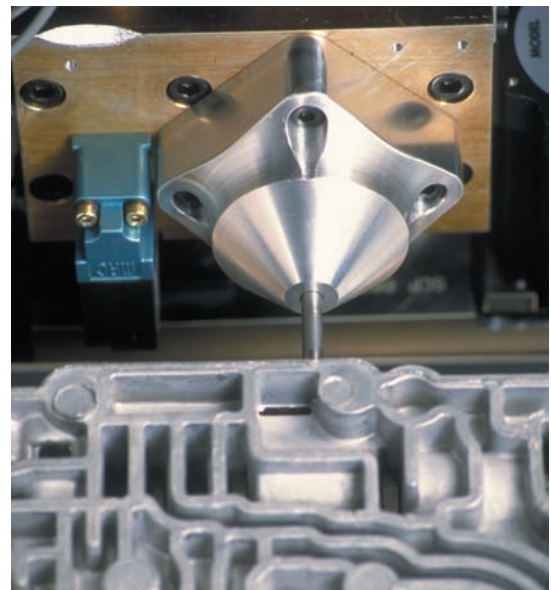
### FEATURES

- Extremely low noise marking
- Powerful, rugged marking head drive mechanism for deep scribe marking
- 2½" x 7½" (63.5 x 190.5mm) marking window
- Especially well suited for VIN (Vehicle Identification Number) applications
- Compact, convenient TMC420 Controller with rubber keyboard and 4-line LCD display — no PC required
- Automatically generates serial numbers, date, time and shift codes
- Easily interfaced to PLCs (Programmable Logic Controllers) and Host Computers
- Marks a wide range of materials from soft plastics up to hardened steel
- Stores up to 75 marking patterns



### OPTIONAL ACCESSORIES

- Marking head support tooling and balancers
- Panel-mount and IP/NEMA-Rated Controllers
- Logo/Font design software package for design of custom fonts or logos
- PC-Based Upgrade Utility available FREE from [www.telesis.com](http://www.telesis.com) for easy software upgrade
- PC-Based Pattern Back-up Utility available FREE from [www.telesis.com](http://www.telesis.com)
- Optional SS5500/420 Servo Motor Driven Versions Available For High Speed Applications



**Compact TMC420 Controller**  
features 4-line LCD Display — no PC required.