

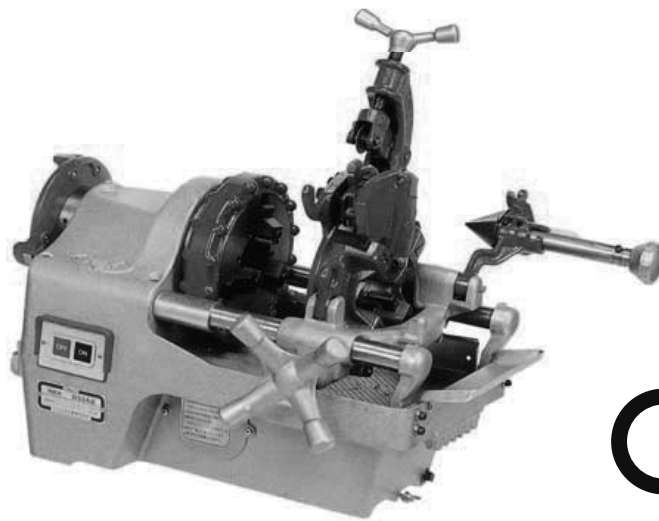
# REX

PIPE THREADING MACHINE

## N50A Series

# PARTS LIST

As of November 2008



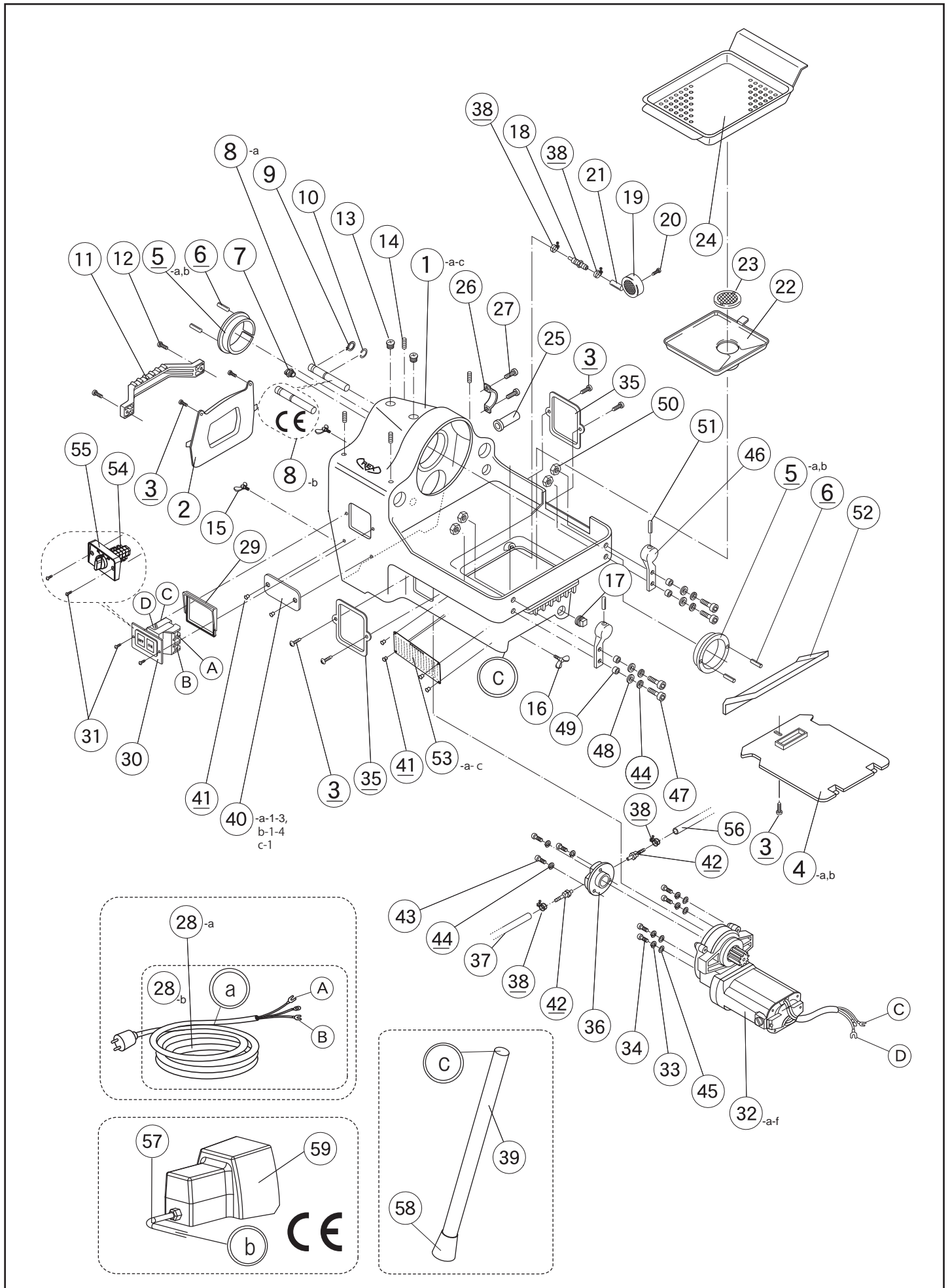
### CONTENTS

1. BASE \*Include CE
2. MOTOR, PUMP
3. MAIN SHAFT
4. CARRIAGE
5. CUTTER
6. REAMER

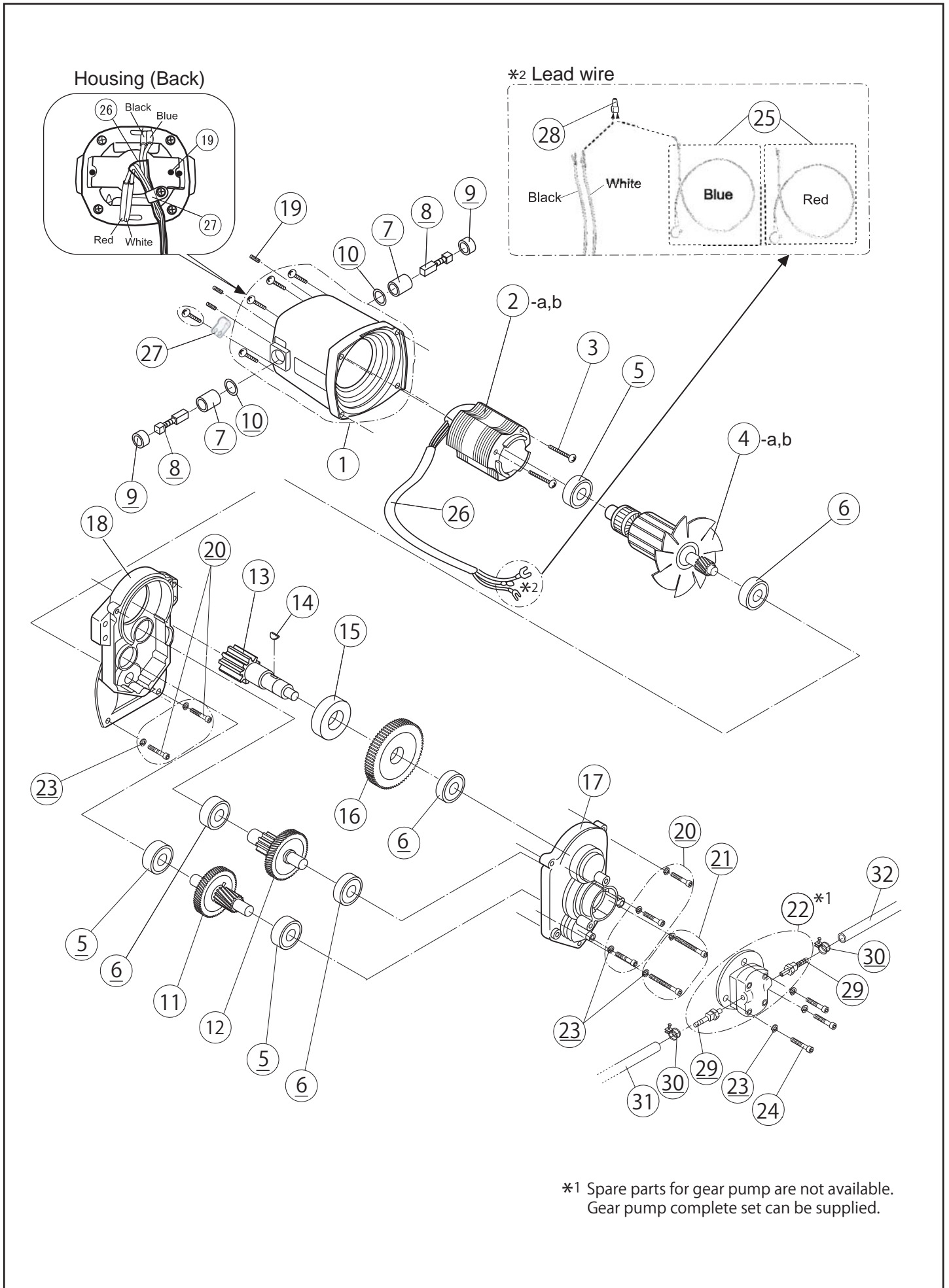
# REX

\*Some dedicated maintenance parts for products past 7 years after manufacture are discontinued as stocks run out.

# N50A Series - 1. BASE \*Include CE

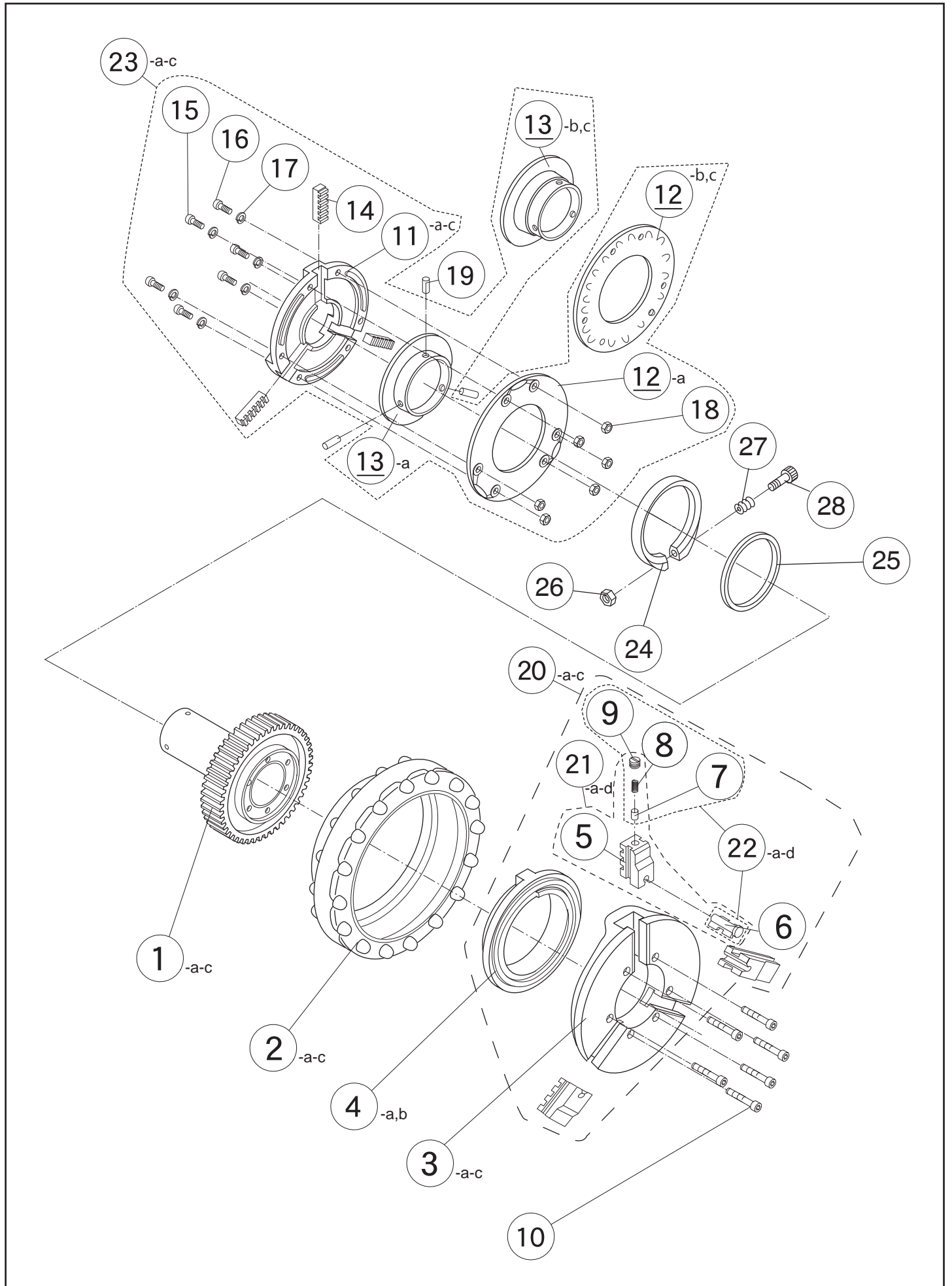


# N50A Series - 2. MOTOR, PUMP

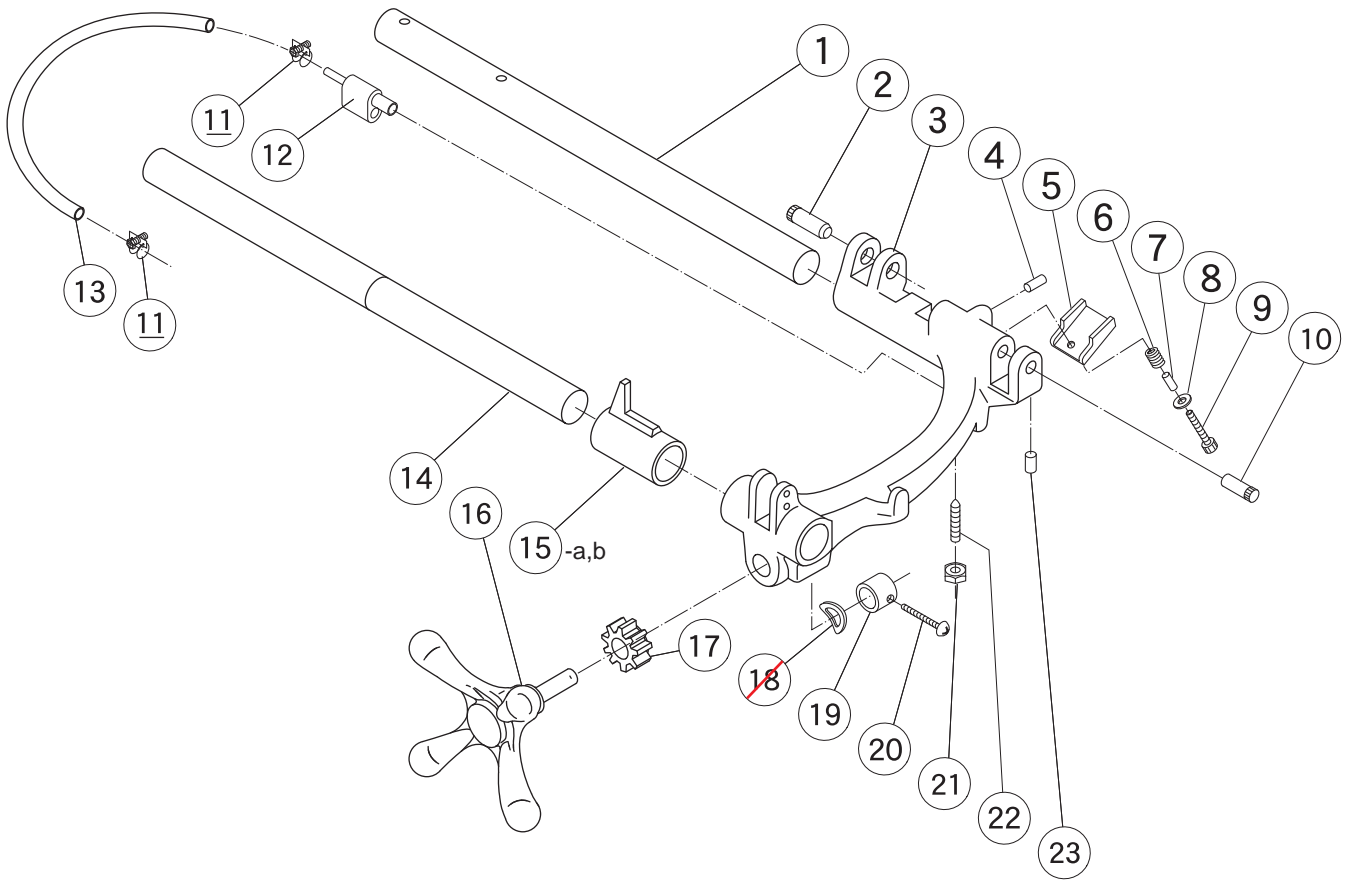


\*1 Spare parts for gear pump are not available.  
Gear pump complete set can be supplied.

# N50A Series - 3. MAIN SHAFT

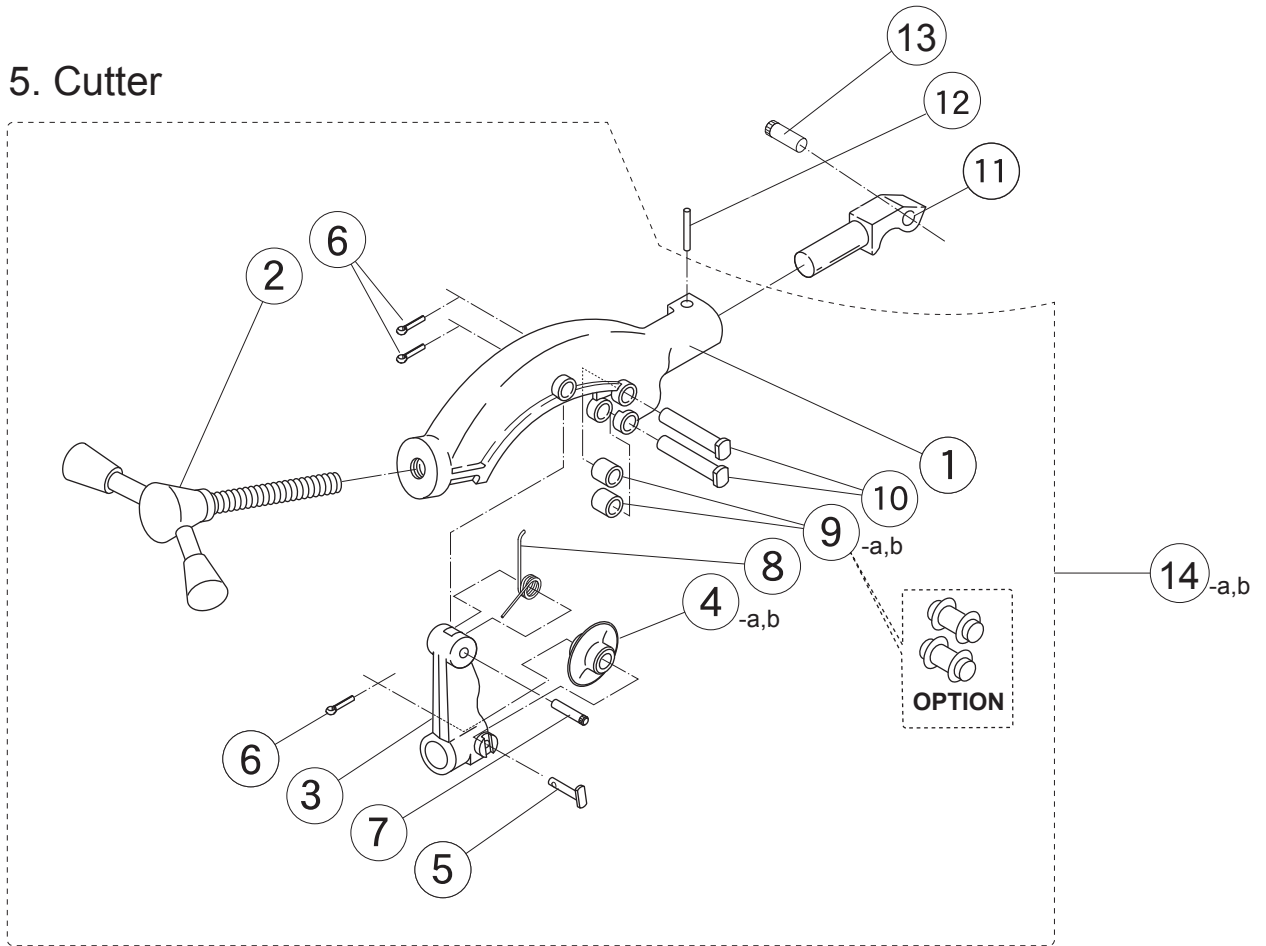


# N50A Series - 4. CARRIAGE

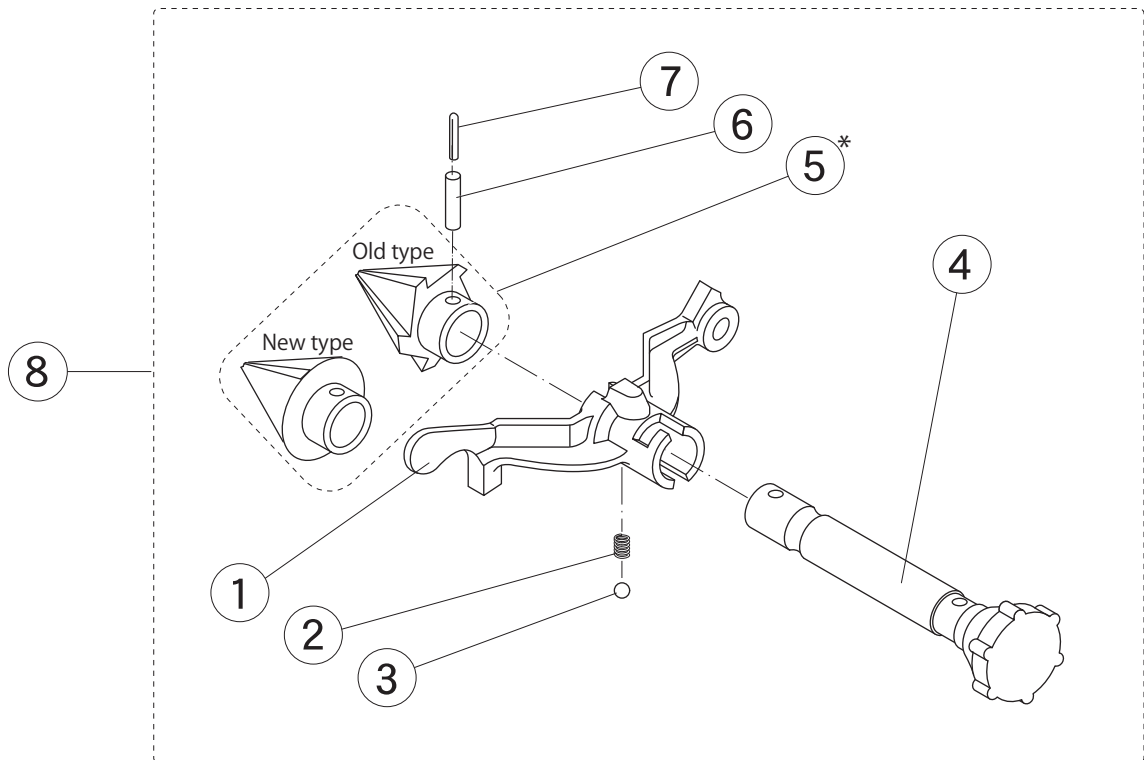


# N50A Series - 5. CUTTER / 6. REAMER

## 5. Cutter



## 6. Reamer



# **REX**

[www.rexind.co.jp](http://www.rexind.co.jp)

## **REX INDUSTRIES CO., LTD.**

**Overseas Sales Section & Factory :**

1-9-3, Hishiyahigashi, Higashi Osaka 578-0948, Japan.

Tel.: 81 - 72 - 961 - 9820 Fax.: 81 - 72 - 961 - 9878

URL <http://www.rexind.co.jp>

P.L.N50A-CE1
1702R 0000

\*Some dedicated maintenance parts for products past 7 years after manufacture are discontinued as stocks run out.

Page No.	Item No.	Page Title	CE	Parts No.	Part Name	Spec.	Q'ty
1	1-a	1.Base	No	N101	Base casting assembly		1
1	1-b	1.Base	Yes	N090	Base casting assembly CE		1
1	1-c	1.Base		N001	Base casting assembly CE/JPN		1
1	2	1.Base		N035	Rear cover		1
1	3	1.Base		W252	Round head machine screw	(M5x10)	7
1	4-a	1.Base	No	N034	Bottom cover		1
1	4-b	1.Base	Yes	N086	Bottom cover CE	**Discontinued	1
1	5-a	1.Base	No	1010	Front/Rear main shaft bearing	Inner diameter:73mm	2
1	5-b	1.Base		4005	Front/Rear main shaft bearing CE/JPN	Inner diameter:79mm	2
1	6	1.Base		WL41	Roll pin	(4X10)	4
1	7	1.Base	Yes	N054	Cap		1
1	8-a	1.Base	No	N045	Oil tube cover		1
1	8-b	1.Base	Yes	N084	Hose cover (Oil tube cover CE)	**Discontinued	1
1	9	1.Base		WW16	Snap ring	(out side φ16)	1
1	10	1.Base		WX16	Retaining ring	(φ16)	1
1	11	1.Base		N038	Rear grip	**Discontinued	1
1	12	1.Base		W083	Socket head cap screw	(M8x25)	2
1	13	1.Base		N039	Oil cap		2
1	14	1.Base		W782	Hex-socket set screw	(Cup point, M8x10)	4
1	15	1.Base		N128	Wing screw	(M8x25)	2
1	16	1.Base		N127	Wing screw (M8x65)	**Discontinued	1
1	17	1.Base		WA46	Drain plug	(PT 1/2")	1
1	18	1.Base		T056	Nipple		1
1	19	1.Base		N048	Strainer		1
1	20	1.Base		WA55	Round head tapping screw	(M5x8)	1
1	21	1.Base		0410-55	Oil line tube Red (Strainer)	(55mm/Red) / Old No.N049	1
1	22	1.Base		N030	Tank upper cover		1
1	23	1.Base		N029	Oil filter		1
1	24	1.Base		N031	Scrap receiver		1
1	25	1.Base	No	7021	Cord bush		1
1	26	1.Base	No	7098	Binder C-15		1
1	27	1.Base	No	W245	Round head machine screw	(M4x20)	2
1	28-a	1.Base	No	N122	Capyre cord	(3.5M)	1
1	28-b	1.Base	No	Z992	Capyre cord WH	250FT	1
1	29	1.Base	No	N041	Switch fixed plate		1
1	30	1.Base	No	N008	Switch		1
1	31	1.Base	No	-	Oval head machine screw	(M4x16)	2
1	32-a	1.Base	No	N009	Motor assembly 100V	**Discontinued	1
1	32-b	1.Base	No	N139	Motor assembly 100V R/L	**Discontinued	1
1	32-c	1.Base	No	N130	Motor assembly 120V		1
1	32-d	1.Base		N109	Motor assembly 220V		1
1	32-e	1.Base		N140	Motor assembly 220V R/L	**Discontinued	1
1	32-f	1.Base		N141	Motor assembly 240V	**Discontinued	1
1	33	1.Base		WG08	Spring washer	(φ8)	4
1	34	1.Base		W08B	Socket head cap screw (with seal)	(M8x45)	4
1	35	1.Base		N036	Side cover		2
1	36*	1.Base		9010*	Gear pump* with joint (1035)	*Complete set can be supplied	1
1	37	1.Base		0410-380	Oil line tube Red (Intake)	380mm/Red Old no:N046	1
1	38	1.Base		ZJ50	Pipe band	(10mm)	4
1	39	1.Base		N121	Pipe Stand with N125 Leg cap		3
1	40-a-1	1.Base	No	L008	Name plate for N50A 220V 600W/E	**Discontinued	1
1	40-a-2	1.Base	Yes	LR05/LR08	Name plate for N50A-CE 110V/600W/E	**Discontinued	1
1	40-a-3	1.Base	Yes	N210	Name plate for N50A-CE 230V	**Discontinued	1
1	40-b-1	1.Base	Yes	N222	Name plate for N50AV-CE 110V	**Discontinued	1
1	40-b-2	1.Base	Yes	N728	Name plate for N50AV-CE 120V	**Discontinued	1
1	40-b-3	1.Base	No	N138	Name plate for N50AV 220V/600W/E	**Discontinued	1
1	40-b-4	1.Base	Yes	L051/N220	Name plate for N50AV-CE 230V	**Discontinued	1
1	40-c-1	1.Base	No	N065	Name plate for N50A III 220V/600W/E	**Discontinued	1
1	41	1.Base		WN34	Rivet	(#4x5)	2
1	42*	1.Base		1035*	Joint		2
1	43	1.Base		W062	Socket head cap screw	(M6x16)	3
1	44	1.Base		WG06	Spring washer	(φ6)	7
1	45	1.Base		WI82	Washer	(φ8)	4
1	46	1.Base		N013	Support		2
1	47	1.Base		W065	Socket head cap screw	(M6x30)	4
1	48	1.Base		W162	Washer	(φ6)	4
1	49	1.Base		N057	Support collar		4
1	50	1.Base		WC06	Nut	(M6)	4
1	51	1.Base		WL60	Roll pin	(φ6x12)	2
1	52	1.Base		N624C	Oil pan	Old No.N033	1
1	53-a	1.Base	Yes	L099	Warning plate		1
1	53-b	1.Base	Yes	L021	Warning plate CE	**Discontinued	1
1	53-c	1.Base	Yes	L022	Warning plate CE		1
1	54	1.Base	No	F065	Cam switch (for F & R)		1
1	55	1.Base	No	F066	Switch plate (for F & R)		1
1	56	1.Base		0410-720	Oil line tube Red (Feed)	(720mm) / Old No. ZD03	1
1	57	1.Base	Yes	FSW2	Cord bush	CE	1
1	58	1.Base		N125	Leg cap		3
1	59	1.Base	Yes	FSW1	Foot switch	230V /115V CE	1



**\*Some dedicated maintenance parts for products past 7 years after manufacture are discontinued as stocks run out.**

Page No.	Item No.	Page Title	CE	Parts No.	Part Name	Spec.	Q'ty
2	1	2.Motor, Pump		NM25	Housing		1
2	2-a	2.Motor, Pump		NM08	Stator assembly (220V)		1
2	2-b	2.Motor, Pump		NM05	Stator assembly (110V)		1
2	3	2.Motor, Pump		W25A	Round head machine screw	(M5x60)	4
2	4-a	2.Motor, Pump		NM04	Armature assembly (220V)		1
2	4-b	2.Motor, Pump		NM01	Armature assembly (110V)		1
2	5	2.Motor, Pump		S701	Bearing	(#6200)	3
2	6	2.Motor, Pump		I202	Bearing	(#6201ZZ)	4
2	7	2.Motor, Pump		NM16	Carbon brush holder	(set)	2
2	8	2.Motor, Pump		NM10	Carbon brush (auto-stop)		1set
2	9	2.Motor, Pump		NM17	Carbon brush cap	(set)	2
2	10	2.Motor, Pump		NM15	Stop plate	per set	2
2	11	2.Motor, Pump		NM20	Second pinyon gear set		1set
2	12	2.Motor, Pump		NM22	Third pinyon gear set		1set
2	13	2.Motor, Pump		NM24	Spindle		1
2	14	2.Motor, Pump		-	Woodruff key	(4x16)	1
2	15	2.Motor, Pump		7M30	Bearing	(#6304ZZ)	1
2	16	2.Motor, Pump		NM23	Final gear		1
2	17	2.Motor, Pump		NM26	Gear cover		1
2	18	2.Motor, Pump		NM28	Inner cover		1
2	19	2.Motor, Pump		W730	Hex head set screw (Cup point)	(M3x6)	3
2	20***	2.Motor, Pump		-	Round head machine screw (M5x25) with spring washer 6	W255 + WG06 /per set	5
2	20***	2.Motor, Pump		-	Round head machine screw (M5x65) with spring washer 6	W25B + WG06 /per set	2
2	22*	2.Motor, Pump		*9010	Gear pump* with joint (1035 / No.29)		1
2	23	2.Motor, Pump		WG06	Spring washer	(M6)	10
2	24	2.Motor, Pump		W062	Socket head cap screw	(M6x16)	3
2	25	2.Motor, Pump		NM14	Internal wire assembly (Red: To Switch / Blue : with white wire to Stator)	Red & Blue /per set	2
2	26	2.Motor, Pump		-	Plastic tube		1
2	27	2.Motor, Pump		-	Nylon clip	(NK-4N)	1
2	28	2.Motor, Pump		-	Insulation cap (for Blue & white internal wire)		1
2	29*	2.Motor, Pump		1035	Joint		2
2	30	2.Motor, Pump		ZJ50	Pipe band	10mm	2
2	31	2.Motor, Pump		0410-380	Oil line tube Red (Intake)	380mm/Red Old no:N046	1
2	32	2.Motor, Pump		0410-720	Oil line tube Red (Feed)	720mm/Red Old no:N047,ZD03	1

\*Spare parts for gear pump are not available. Gear pump complete set can be supplied. \*\*\*To be ordered as a set.

\*Some dedicated maintenance parts for products past 7 years after manufacture are discontinued as stocks run out.

Page No.	Item No.	Page Title	CE	Parts No.	Part Name	Spec.	Q'ty
3	1-a	3.Main Shaft	No	02N5	Main shaft with gear	**Discontinued / for N108	1
3	1-b,c	3.Main Shaft	Yes	02N4	Main shaft with gear for CE/JPN	**Discontinued / for N085,4011	1
3	2-a	3.Main Shaft	No	N107	Hand wheel		1
3	2-b,c	3.Main Shaft	Yes	N080	Hand wheel CE/JPN (Old no.:N007)		1
3	3-a	3.Main Shaft	No	NH10	Chuck body (for RT/RS type)	**Discontinued	1
3	3-b,c	3.Main Shaft	Yes	NH00	Chuck body CE/JPN (for KS type)		1
3	4-a	3.Main Shaft	No	NS00	Chuck scroll		1
3	4-b	3.Main Shaft	Yes	-	Chuck scroll CE		1
3	5-a	3.Main Shaft	No	N1CJ	Chuck jaw (for RT/RS type)		3
3	5-b	3.Main Shaft	Yes	N0CJ	Chuck jaw CE/JPN (for KS type)	***To be ordered as a set.(No.21)	3
3	6	3.Main Shaft		-	Chuck jaw insert	***To be ordered as a set.(No.22)	3
3	7	3.Main Shaft		-	Spring retainer	***To be ordered as a set.(No.22)	3
3	8	3.Main Shaft		-	Spring	***To be ordered as a set.(No.22)	3
3	9	3.Main Shaft		-	Hex-socket set screw(M7x7)	***To be ordered as a set.(No.22)	3
3	10	3.Main Shaft		W07B	Socket head cap screw (without knurling)	(M7x53.5)	6
3	11-a	3.Main Shaft	No	40S1EX	Rear chuck receptacle	for N108	1
3	11-b	3.Main Shaft	Yes	NCS1	Rear chuck receptacle CE	for N085 /Old No.40S1	1
3	11-c	3.Main Shaft		40S1	Rear chuck receptacle JPN	for 4011	1
3	12-a	3.Main Shaft	No	40S2B	Rear chuck cover	for N108	1
3	12-b	3.Main Shaft	Yes	NCS2	Rear chuck cover CE	for N085 / Old No.40S2	1
3	12-c	3.Main Shaft	Yes	40S2	Rear chuck cover JPN	for 4011	1
3	13-a	3.Main Shaft	No	40S3EX	Rear scroll	for N108	1
3	13-b,c	3.Main Shaft		40S3	Rear scroll CE/JPN	for N085,4011	1
3	14	3.Main Shaft		N0SS	Rear chuck jaw	3pcs/Set	3
3	15	3.Main Shaft		-	Reamer screw	(M5x15)	2
3	16	3.Main Shaft		-	Round head machine screw	(M5x15)	4
3	17	3.Main Shaft		WG05	Spring washer	(φ5)	6
3	18	3.Main Shaft		WC05	Nut	(M5)	6
3	19	3.Main Shaft		WM64	Grooved pin	(φ6x14)	3
3	20-a	3.Main Shaft	No	N106	Chuck complete set (RT-type)	(No.3-9)	1set
3	20-b,c	3.Main Shaft	Yes	N006	Chuck complete set CE/JPN (KS-type)	(No.3-9)	1set
3	21-a	3.Main Shaft	No	N1CJS	Chuck jaw set (RT-type)	(No.5-9)	1set
3	21-b,c	3.Main Shaft	Yes	N0CJS	Chuck jaw set CE/JPN (KS-type)	(No.5-9)	1set
3	21-d	3.Main Shaft		72CJS	Chuck jaw set (RS-type)	(No.5-9) / Option	1set
3	22-a	3.Main Shaft	No	70RT	Chuck jaw insert set (RT-type)	(No.6-9)	1set
3	22-b,c	3.Main Shaft	Yes	70KS	Chuck jaw insert set CE/JPN (KS-type)	(No.6-9)	1set
3	22-d	3.Main Shaft		70RS	Chuck jaw insert set (RS-type)	(No.6-9) / Option	1set
3	23-a	3.Main Shaft	No	N108	Rear chuck complete set	(No.11-18)	1set
3	23-b	3.Main Shaft	Yes	N085	Rear chuck complete set CE	(No.11-18)	1set
3	23-c	3.Main Shaft		4011	Rear chuck complete set JPN	(No.11-18)	1set
3	24	3.Main Shaft	Yes	N082	Band for after run		1
3	25	3.Main Shaft	Yes	N083	Thrust ring	**Discontinued	1
3	26	3.Main Shaft	Yes	WE16	U Nut	(M6)	1
3	27	3.Main Shaft	Yes	F030	Spring		1
3	28	3.Main Shaft	Yes	W069	Socket head cap screw	(M6x55)	1

\*Some dedicated maintenance parts for products past 7 years after manufacture are discontinued as stocks run out.

Page No.	Item No.	Page Title	CE	Parts No.	Part Name	Spec.	Q'ty
4	1	4.Carriage		N012	Carriage support bar B	**Discontinued	1
4	2	4.Carriage		1076	Cutter arm stop pin		1
4	3	4.Carriage		N010	Carriage	(with 39,40)	1
4	4	4.Carriage		G861	Stopper	(φ10)	1
4	5	4.Carriage		N032	Oil drip cover		1
4	6	4.Carriage		N037	Spring		1
4	7	4.Carriage		9056	Collar		1
4	8	4.Carriage		WG06	Washer	(φ6)	1
4	9	4.Carriage		W063	Socket head cap screw	(M6x20)	1
4	10	4.Carriage		1096	Reamer arm stop pin		1
4	11	4.Carriage		ZJ50	Pipe band S	(10mm)	2
4	12	4.Carriage		N044	Oil tube connector	(with 9-11)	1
4	13	4.Carriage		0410-720	Oil line tube Red (Feed)	720mm/Red Old no:N047,ZD03	1
4	14	4.Carriage		N011	Carriage support bar A	**Discontinued	1
4	15-a	4.Carriage	No	N200	Security collar	Red	1
4	15-b	4.Carriage	Yes	N081	Security collar CE	Black (Old No.:N016)	1
4	16	4.Carriage		N014	Carriage handle	(with N015 Feed gear shaft)	1
4	17	4.Carriage		A515	Carriage feed gear		1
4	<del>18</del>	<del>4.Carriage</del>		<del>WH20</del>	<del>Wave washer</del>	<del>(φ20)</del>	<del>4</del>
4	19	4.Carriage		9018	Feed gear stop ring		1
4	20	4.Carriage		W25J	Round head machine screw	(M5x30)	1
4	21	4.Carriage		WD06	Jam nut	(M6)	1
4	22	4.Carriage		W665	Hex-socket head cap screw	(M6x15, truncated cone point)	1
4	23	4.Carriage		N051	Oil Cap		1

\*Some dedicated maintenance parts for products past 7 years after manufacture are discontinued as stocks run out.

Page No.	Item No.	Page Title	CE	Parts No.	Part Name	Spec.	Q'ty
5	1	5.Cutter		N020	Cutter frame		1
5	2	5.Cutter		PM43	Cutter handle with N022 Feed screw	Old No.:N021	1
5	3	5.Cutter		4067	Cutter guide	with Cutter guide pin	1
5	4-a	5.Cutter		135076	Cutter wheel	See the product list	1
5	4-b	5.Cutter		135077	Cutter wheel for SUS	See the product list	1
5	5	5.Cutter		2471	Cutter pin S		1
5	6	5.Cutter		WN12	Spring cotter	( $\phi$ 2.3x15) per pc	3
5	7	5.Cutter		9027	Cutter guide pin		1
5	8	5.Cutter		9025	Spring		1
5	9-a	5.Cutter		5074	Cutter roller		2
5	9-b	5.Cutter		5075	Roller blade for PLP	Option	2
5	10	5.Cutter		5079	Cutter pin L		2
5	11	5.Cutter		N023	Cutter arm		1
5	12	5.Cutter		4072	Cutter frame stop pin		1
5	13	5.Cutter		1076	Cutter arm stop pin		1
5	14-a	5.Cutter		0NCTPS	Complete cutter	(with No.11 & 12 Old No.:0NCU1S)	1
5	14-b	5.Cutter		0NCU3S	Complete cutter for PLP (with No.11 & 12)	**Discontinued	1
6	1	6.Reamer		RY28	Reamer arm	Old No.:N025	1
6	2	6.Reamer		5096	Spring		1
6	3	6.Reamer		WQ08	Steel ball	(8)	1
6	4	6.Reamer		N027	Knob (with N026 Reamer shaft )		1
6	5*	6.Reamer		PM38	Reamer cone*	Old No.:1093	1
6	6	6.Reamer		WL87	Roll pin	(8x45)	1
6	7	6.Reamer		WLA2	Roll pin	(4.75x45)	1
6	8	6.Reamer		0SRM1S	Reamer complete set		1